



## Welch Allyn Diagnostic Cardiology Suite Citrix XenApp Setup Procedure

This procedure is used for setting up the Welch Allyn Diagnostic Cardiology Suite as a Citrix XenApp App.

### Contents

- 1.0 Requirements:**.....1
- 2.0 Citrix XenApp Host Server Software Installation** .....2
  - 2.1 Joint DDC And App Server VMs To The Same Domain ..... 2
  - 2.2 Install XenApp Enterprise Edition 7.18 On The DDC ..... 2
  - 2.3 Install XenApp License on DDC ..... 5
  - 2.4 Create XenApp Site On DDC ..... 10
  - 2.5 Install Virtual Delivery Agent (VDA) On Each App Server VM..... 14
  - 2.6 Configure Remote Desktop Licensing On App Server ..... 20
  - 2.7 Enable USB Devices In App Server VMs..... 21
  - 2.8 Disable Active Accessibility Hook In Citrix Diagnostics On App Server(s)..... 23
  - 2.9 Install Desktop Experience on Server 2012 R2 App Server(s)..... 25
  - 2.10 Install Welch Allyn Diagnostic Cardiology Suite Application(s) on App Server(s) ..... 26
  - 2.11 Create Machine Catalog on DDC ..... 26
  - 2.12 Create A Delivery Group On DDC And Add Application(s) ..... 28
  - 2.13 Create A StoreFront On The DDC ..... 32
  - 2.14 Configure Citrix Policies For Welch Allyn Diagnostic Cardiology Suite Display On DDC..... 36
  - 2.15 Install Connex Link On Client PCs..... 40
  - 2.16 Test StoreFront On Client PCs ..... 41

### 1.0 Requirements:

	Requirements*
Client Machines that will run Citrix XenApps via Citrix Receiver	Microsoft® Windows® 7 Professional (64-bit and 32-bit)
	Microsoft® Windows® 10 Professional (64-bit)
	Citrix Receiver 4.12
	Internet Browser – any that is supported by Citrix (see below)
Desktop Delivery Controller (DDC)	Citrix XenApp Enterprise version 7.18
	Any operating system supported by Citrix
Citrix App Servers	Microsoft® Windows® Server 2012 R2 (64-bit)
	Microsoft® Windows® Server 2016 (64-bit)



	Requirements*
	Citrix Virtual Delivery Agent 7.18
	Welch Allyn Diagnostic Cardiology Suite Client software Welch Allyn Diagnostic Cardiology Suite Manager Client and at least one of: Welch Allyn Diagnostic Cardiology Suite ECG Welch Allyn Diagnostic Cardiology Suite Spirometry
Required for ECG or Spirometry acquisition	Installation of Connex Link – found on Welch Allyn Diagnostic Cardiology Suite Manager installation media
Internet Browser	Any browser supported by Citrix: <ul style="list-style-type: none"><li>• Internet Explorer 11 or 10 (HTTP connections only)</li><li>• Safari 7</li><li>• Google Chrome 73 — Requires enabling Netscape Plug-in API (NPAPI). See <a href="http://support.citrix.com/article/CTX200889">http://support.citrix.com/article/CTX200889</a>.</li><li>• Mozilla Firefox 65</li></ul>

## 2.0 Citrix XenApp Host Server Software Installation

### 2.1 Joint DDC And App Server VMs To The Same Domain

**NOTE:** If the App Server(s) are joined to a domain, this same domain **MUST** be used for authentication in the StoreFront on the Desktop Delivery Controller (DDC). See section **2.13** below (Create A StoreFront).

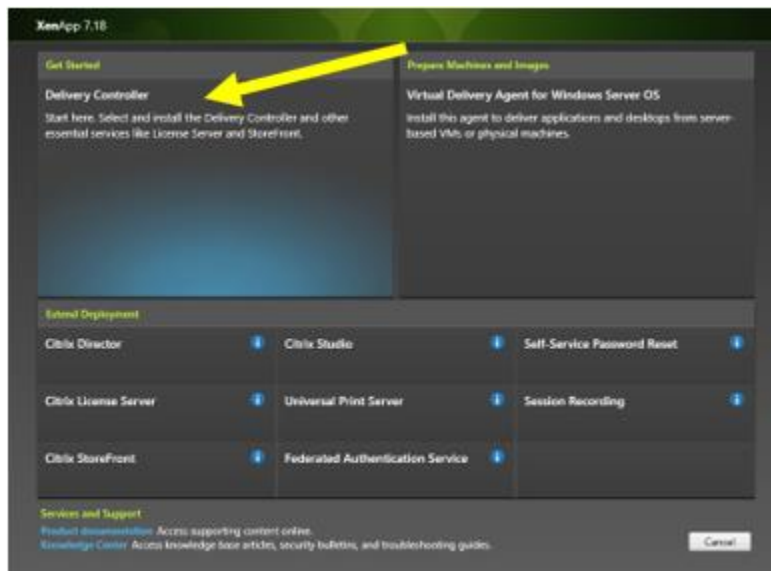
### 2.2 Install XenApp Enterprise Edition 7.18 On The DDC

See <https://www.linkedin.com/pulse/how-install-configure-citrix-xenapp-76-publish-desktops-raza>

- 2.2.1 Logon to the Desktop Delivery Controller (DDC) server as a Domain User with Administrative rights (NOT a local admin user) and launch the Citrix Installer using Run As Administrator. The Domain User is necessary for the final steps of configuration after the reboot.



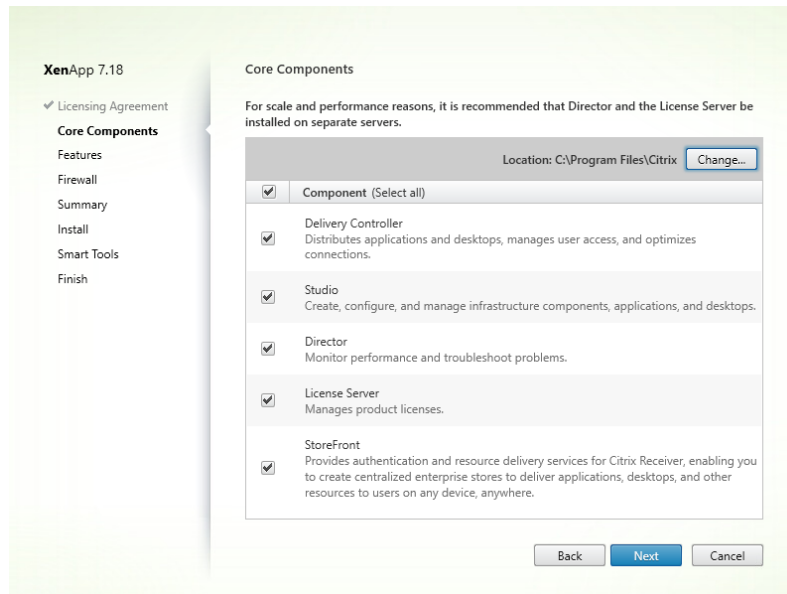
2.2.2 Run **AutoSelect.exe** and click **Start** for XenApp and then click on **Delivery Controller**.



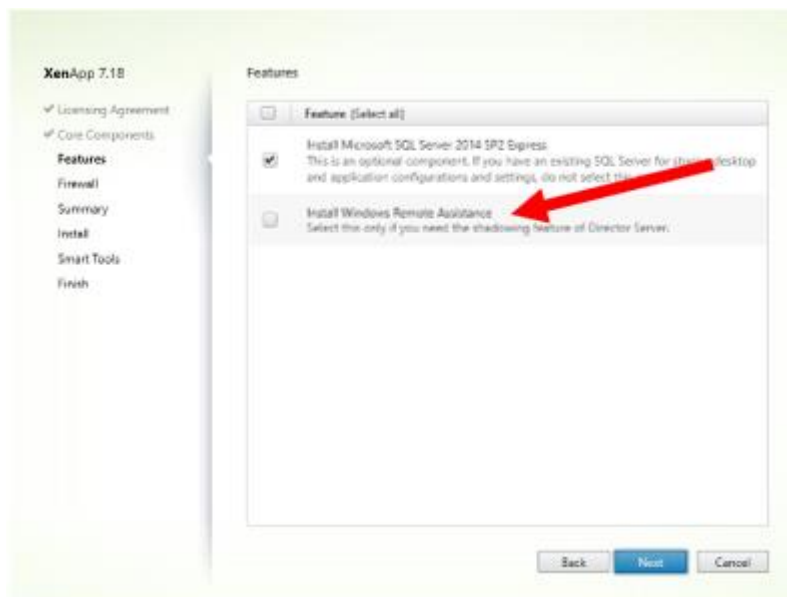
2.2.3 Accept the license agreement.



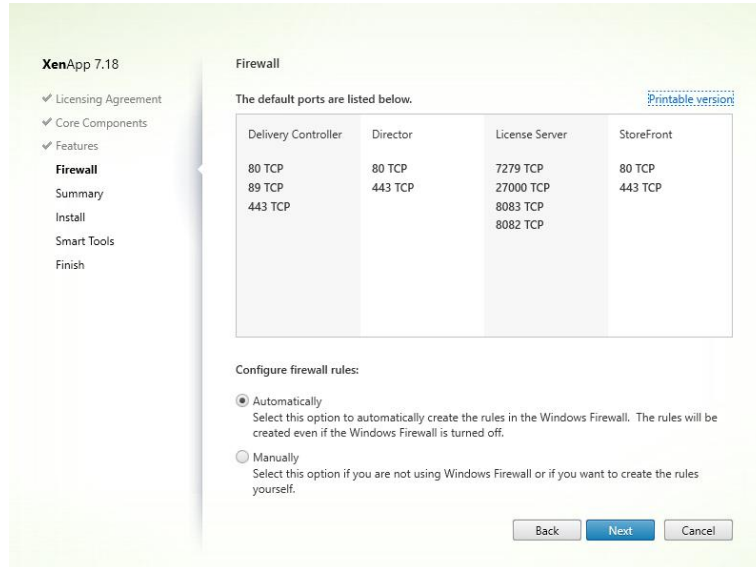
2.2.4 Select all the Core Components and click **Next**. You will be using a local license server installed on your server.



2.2.5 Uncheck **Windows Remote Assistance** but leave **SQL Server 2014** checked.



## 2.2.6 Accept the default of **Configure Firewall Automatically**



- 2.2.7 At the Summary screen click on **Install**. Note the server will restart several times.
- 2.2.8 At the Smart Tools screen select **I do not want to connect to Smart Tools or Call Home**
- 2.2.9 Note that if you are logged in as a domain user you will get an additional checkbox at the bottom to **Launch Studio**. Check the checkbox and click **Finish**. Otherwise you must log out and log back in as a domain user to finish the configuration.

Any user of Citrix Studio must be made an Administrator within Citrix Studio with appropriate scope to accomplish the tasks in the remainder of this procedure.

## 2.3 Install XenApp License on DDC

- 2.3.1 Open your Mycitrix account and Allocate your license. Enter host name and click continue.

Name	Code	Order Number	Host ID Type	Host ID	Quantity/Available
Citrix Store XenApp - Evaluati...		N/A /00001	Host Name ▾	xenapp ▾	99 / 99

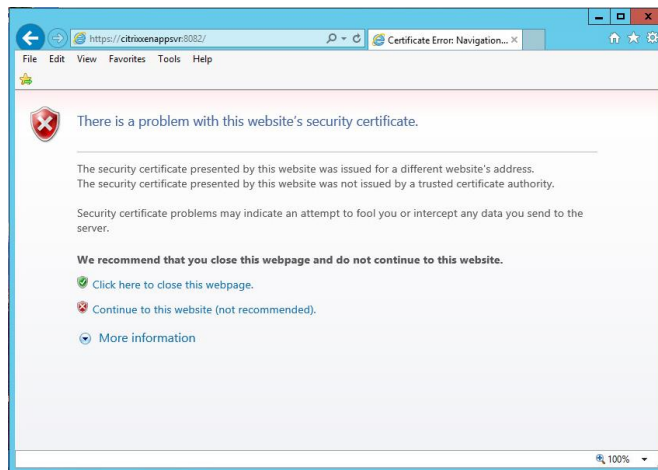


### 2.3.2 Click **Confirm**

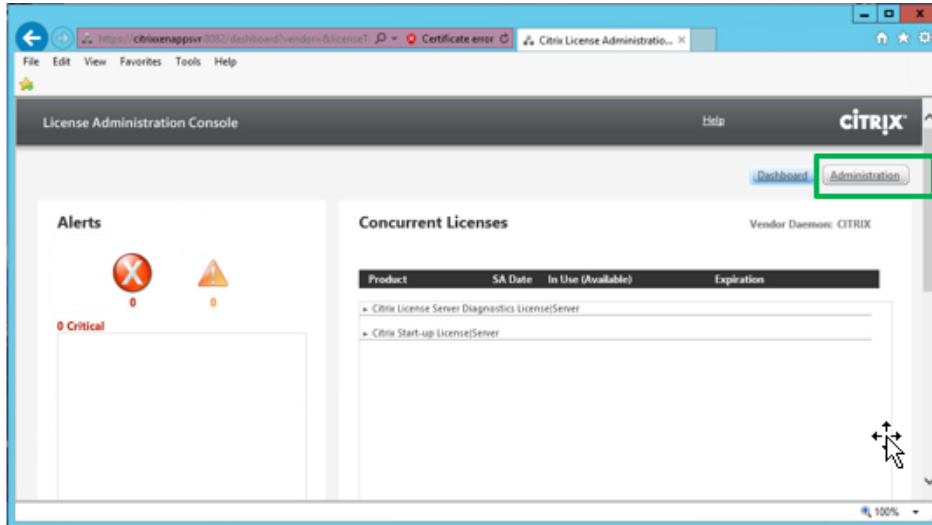
Name	Code	Order Number	Host ID Type	Host ID	Quantity
Citrix Store XenApp - Evaluation (90 day)		N/A /00001	Host Name	xenapp	99

2.3.3 Click **OK** to download and save your license file.

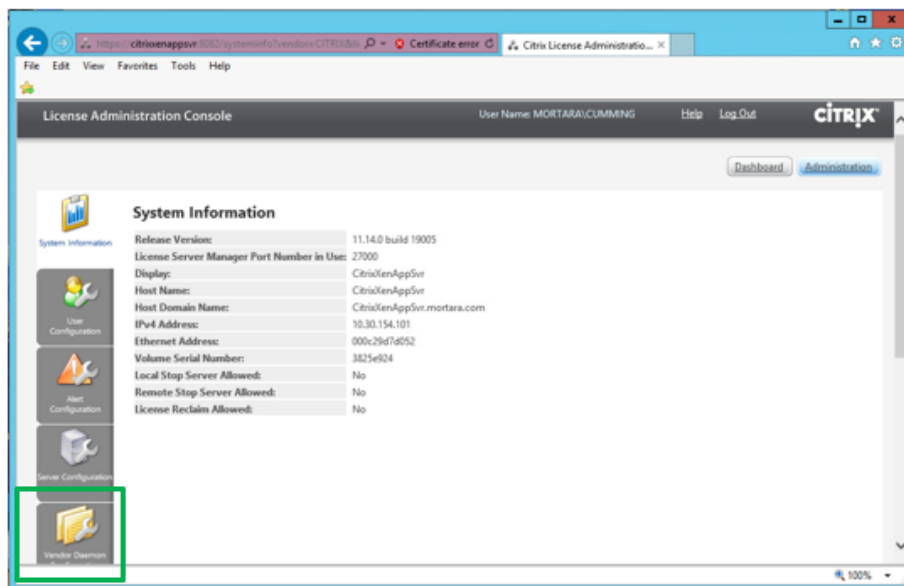
2.3.4 Back on the DDC server, click on **Start > Citrix > License Administration Console** which will open in a web browser pointing to <https://localhost:8082/> with an error message complaining about the site's security certificate. Click on **Continue To This Web Site**.



2.3.5 Click on **Administration** and login with Administrative credentials.

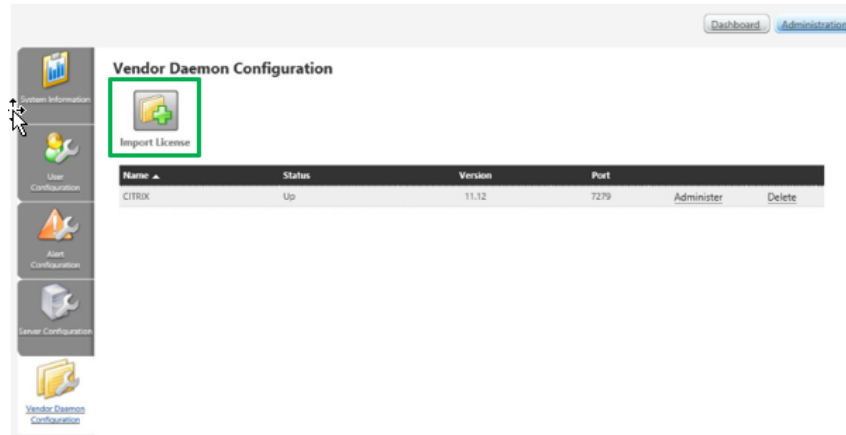


2.3.6 Click on **Vendor Daemon Configuration**

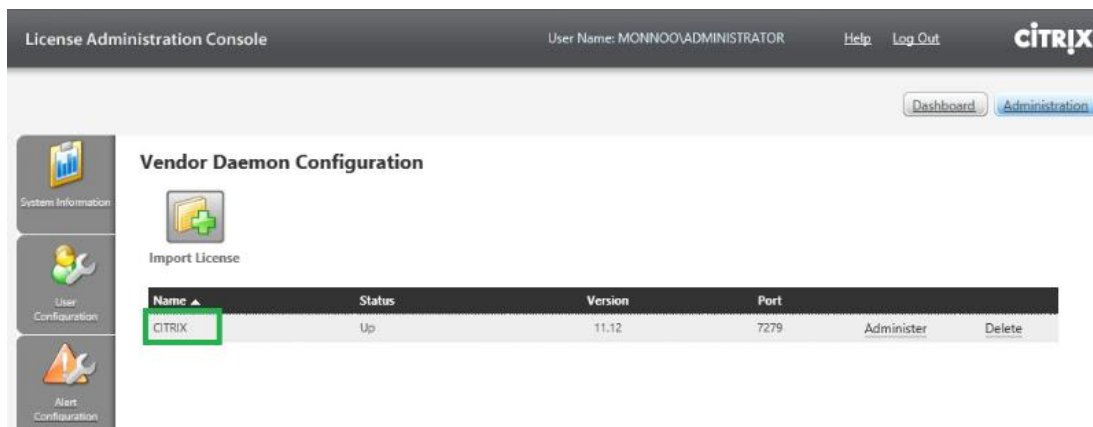




2.3.7 Click on **Import License**.



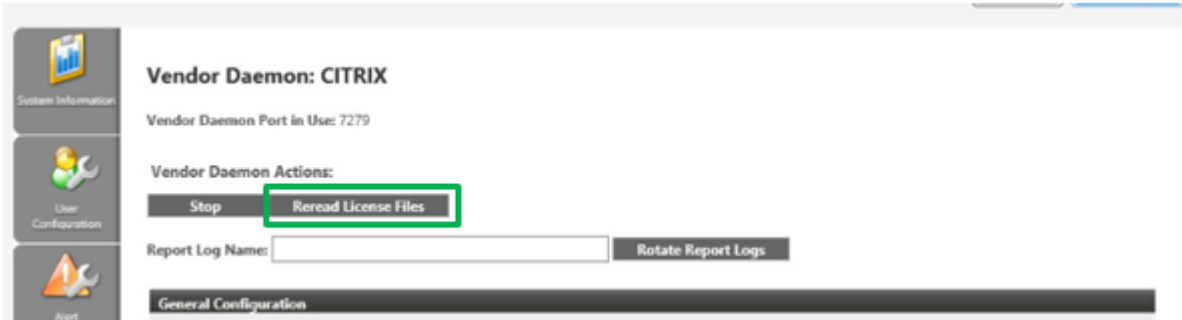
2.3.8 Browse to the license file and click open, then click on **Import License**. After a successful import click on **OK**, then click on **Citrix**.



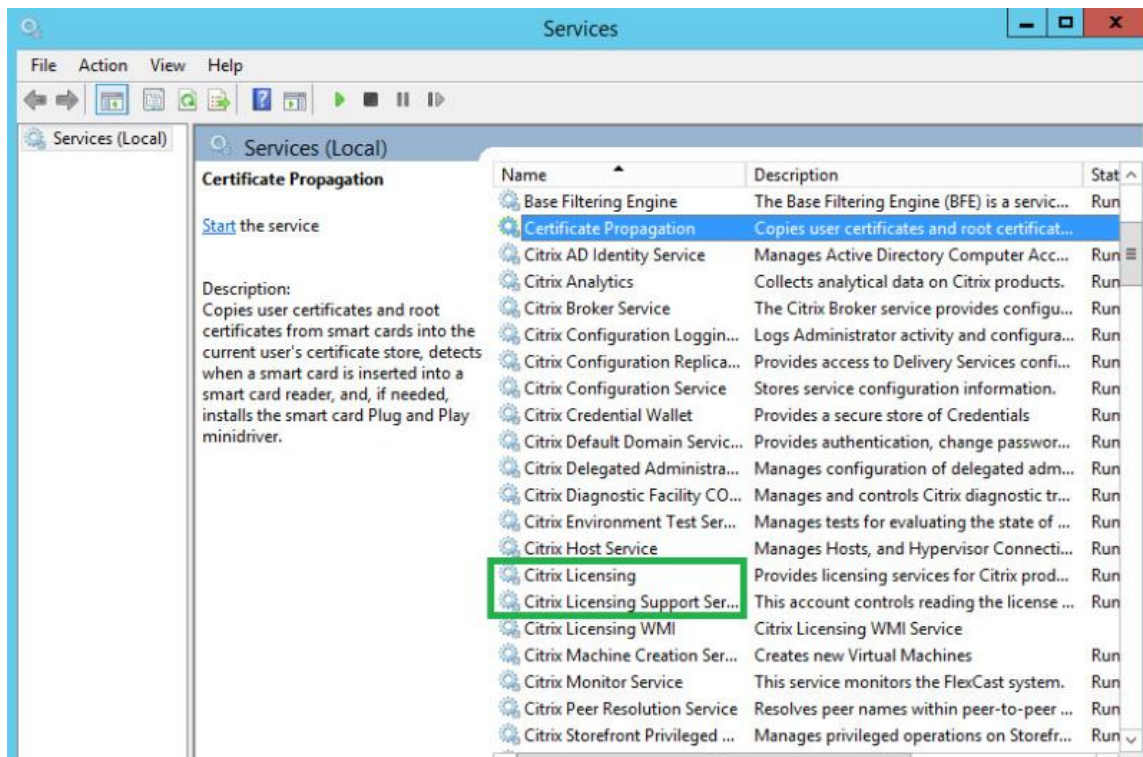




2.3.9 Click on **Reread license file**. Close the web page when done.



2.3.10 Now you must restart the Vendor Daemon. Open services.msc and restart following two services. Close the Services applet when done.

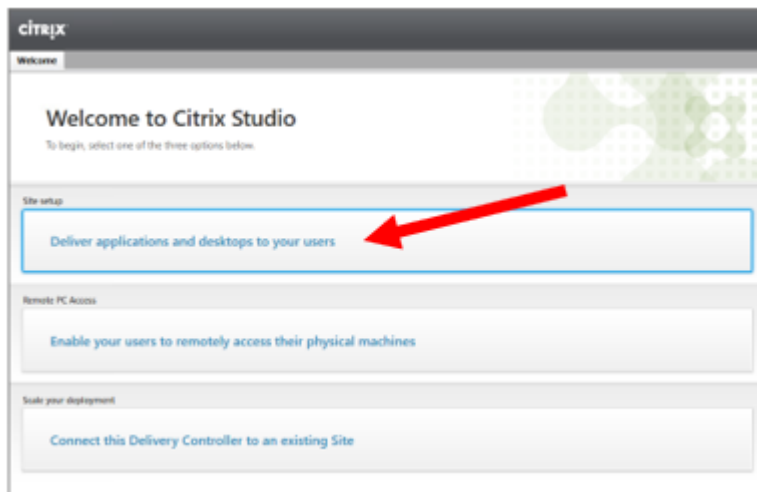




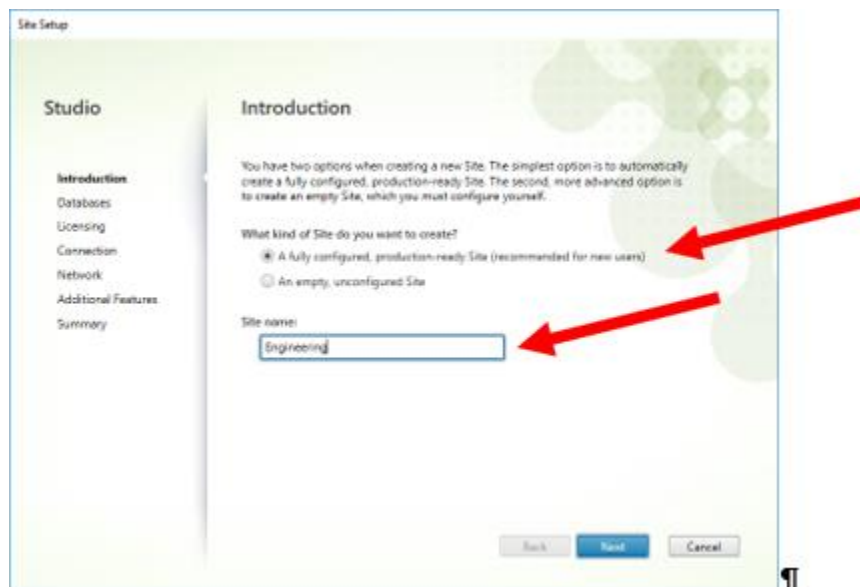
## 2.4 Create XenApp Site On DDC

- 2.4.1 Copy the following shortcuts to the desktop from **Start > Citrix**
  - Citrix Studio
  - Citrix StoreFront
  - Citrix Director

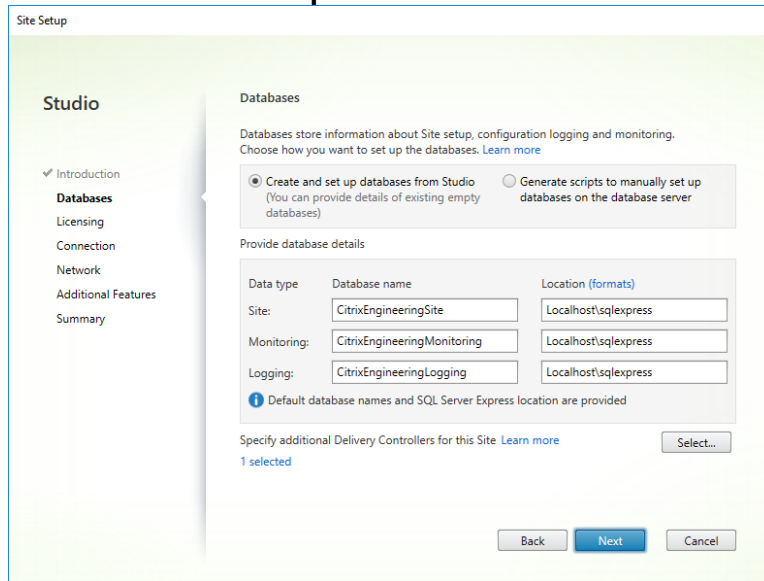
- 2.4.2 Open **Citrix Studio** and click on **Deliver Applications And Desktops To Your Users**



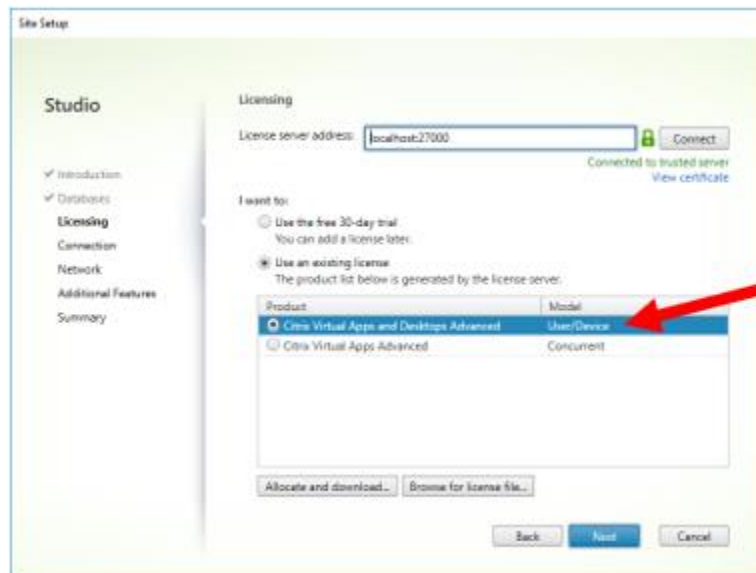
- 2.4.3 Accept the default of **A fully configured, Production-ready Site** and enter the **Site Name**



2.4.4 At the **Databases** screen accept the default database names and locations as well as the default **Create And Setup Databases From Studio**.

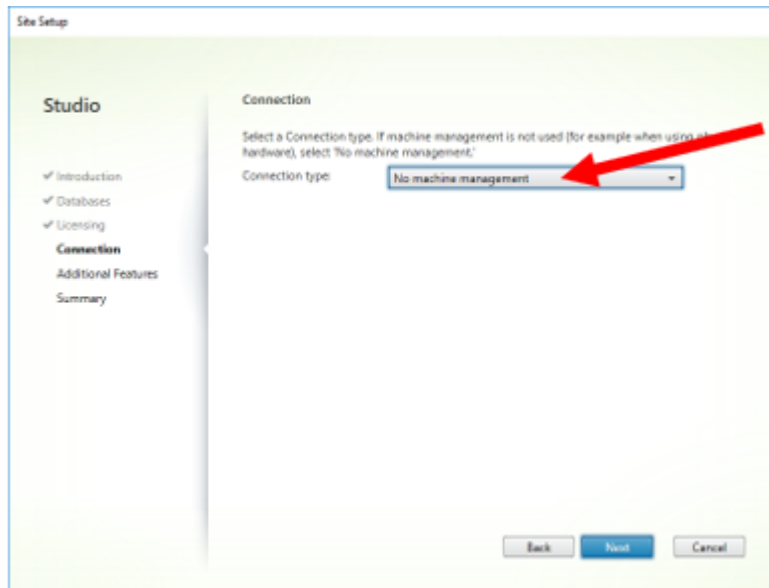


2.4.5 At **Licensing** select **Use An Existing License** and **Citrix Virtual Apps and Desktops Advanced (User/Device)**

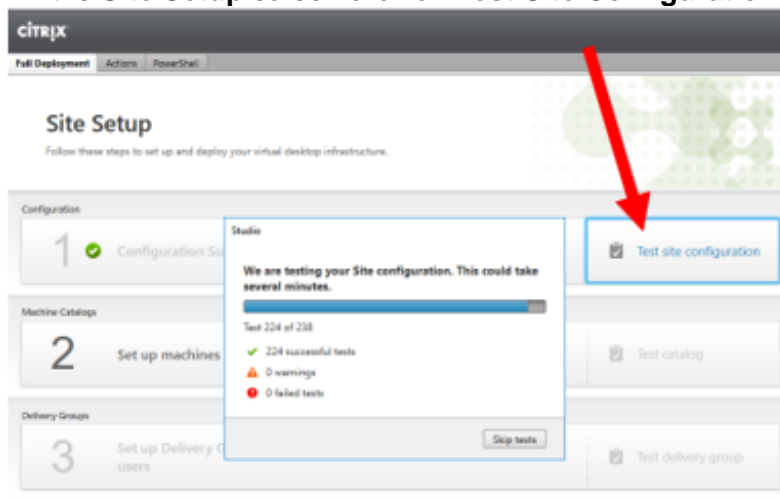


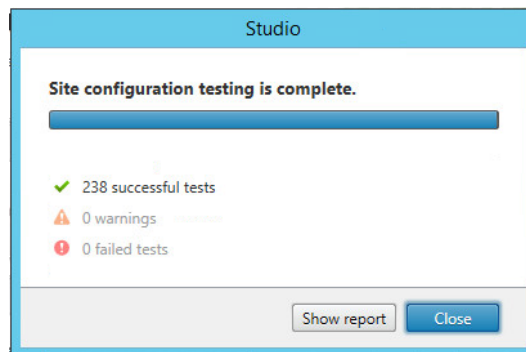


- 2.4.6 At the **Connection** page select **No Machine Management** (which is not the default) and click **Next**



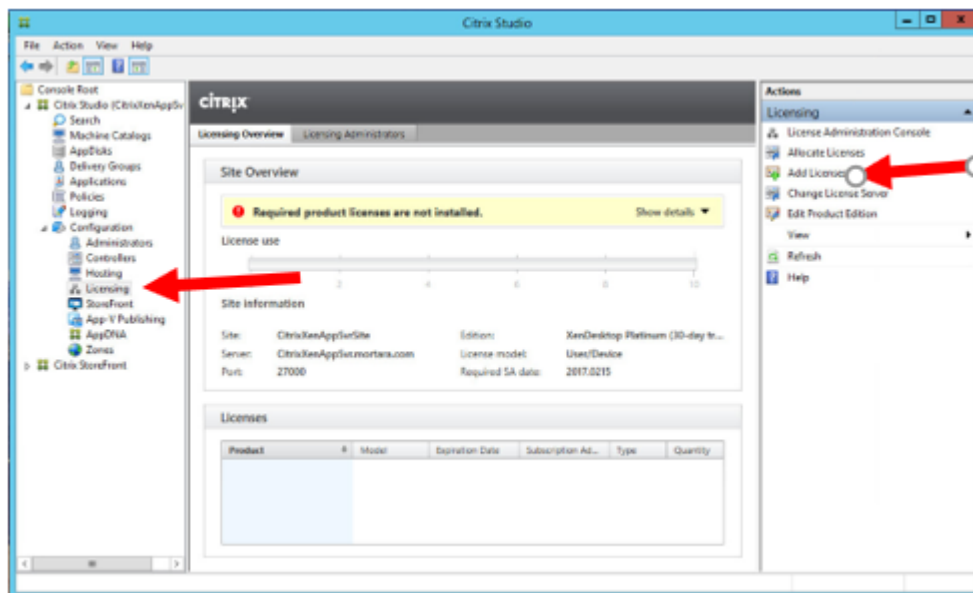
- 2.4.7 At the **Additional Features** page accept the default of no checkboxes checked and click **Next**
- 2.4.8 Click **Finish** on the **Summary** page
- 2.4.9 Back in the **Site Setup** screen click on **Test Site Configuration**. Verify all tests pass.





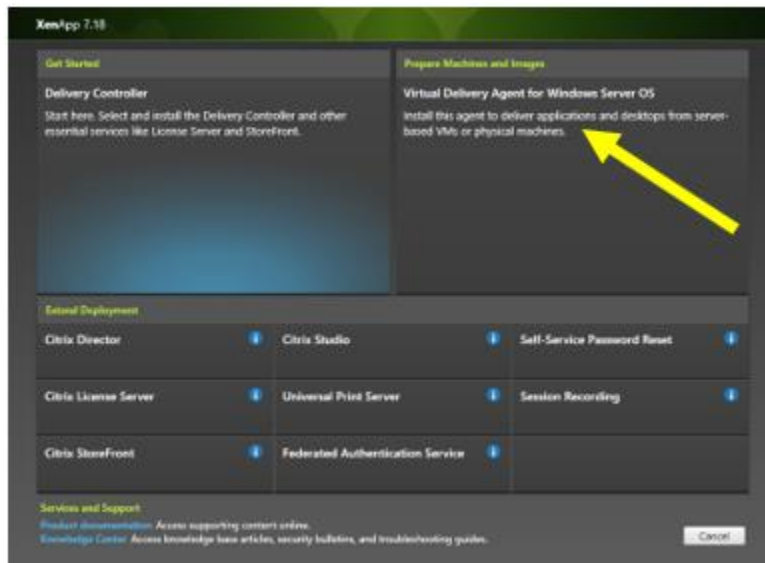
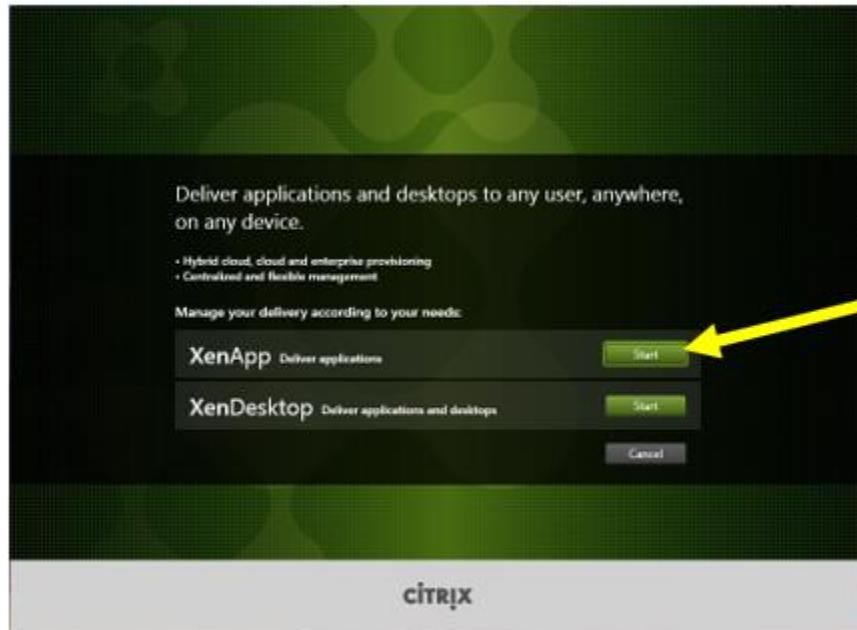
Note: the installation above installs and configures IIS automatically.

2.4.10 Click on **Licensing** in the left pane, and then click on **Add License**. Browse to the license file you downloaded from MyCitrix.



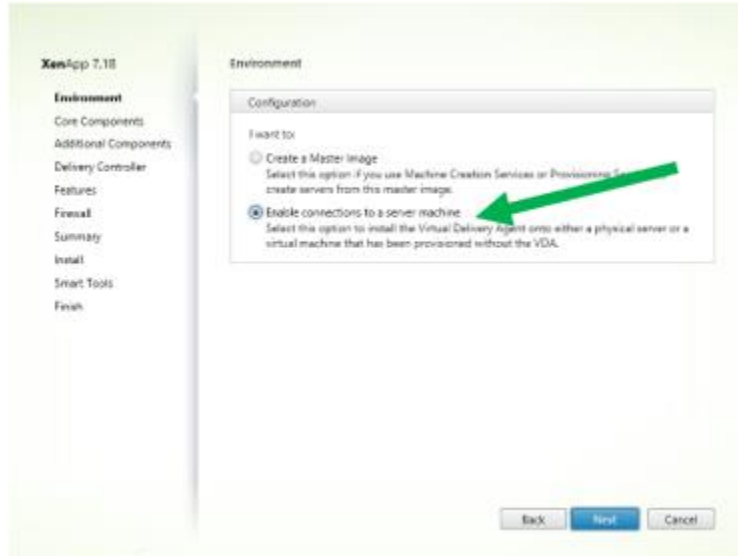
## 2.5 Install Virtual Delivery Agent (VDA) On Each App Server VM

- 2.5.1 Insert the install media and double-click on **AutoSelect.exe**. Click on **Start** for XenApp and then click on **Virtual Delivery Agent for Windows Server OS**

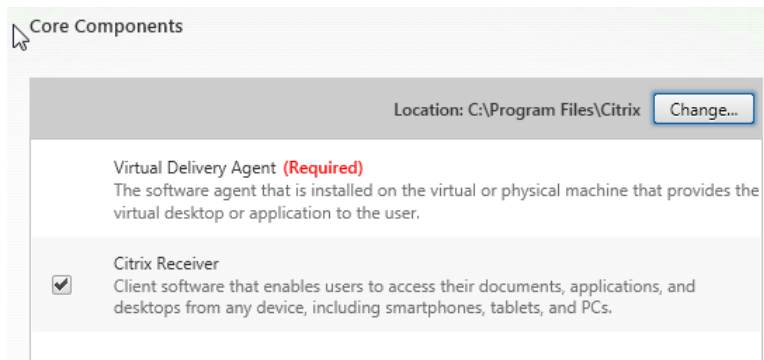




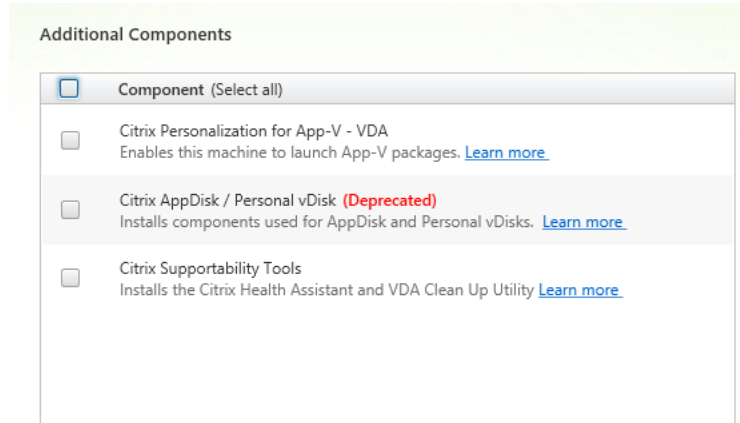
2.5.2 Click "**Enable Connections To Server Machine**" (which is **not** the default). Click **Next**



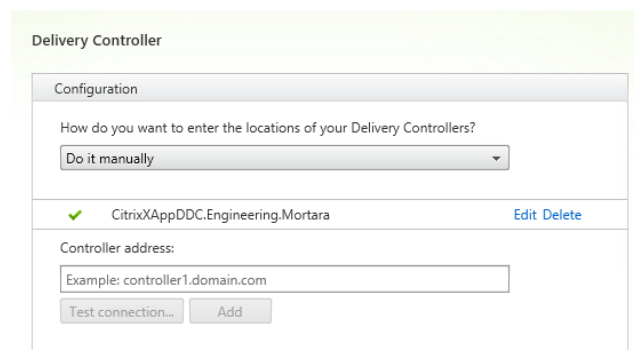
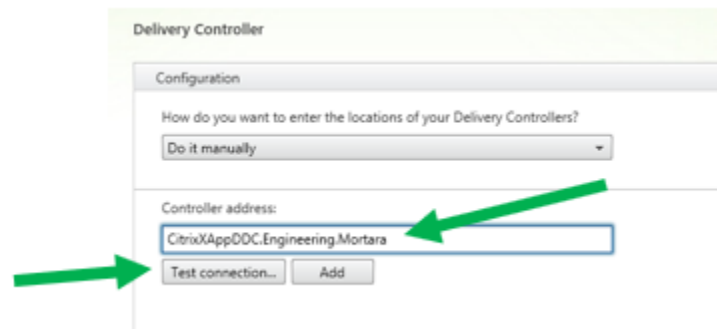
2.5.3 **Citrix Receiver** is optional and is not needed. Click Next.



2.5.4 At **Additional Components** accept the default (nothing selected) and click **Next**.



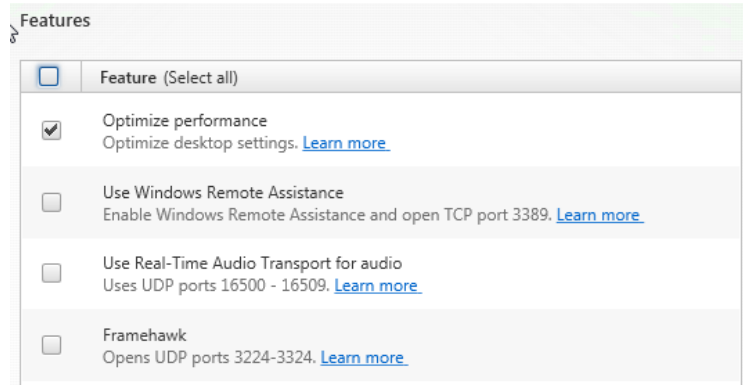
2.5.5 Enter the Fully Qualified Domain Name of the XenApp DDC server and click **Test Connection**. Then click **Add** and **Next**.



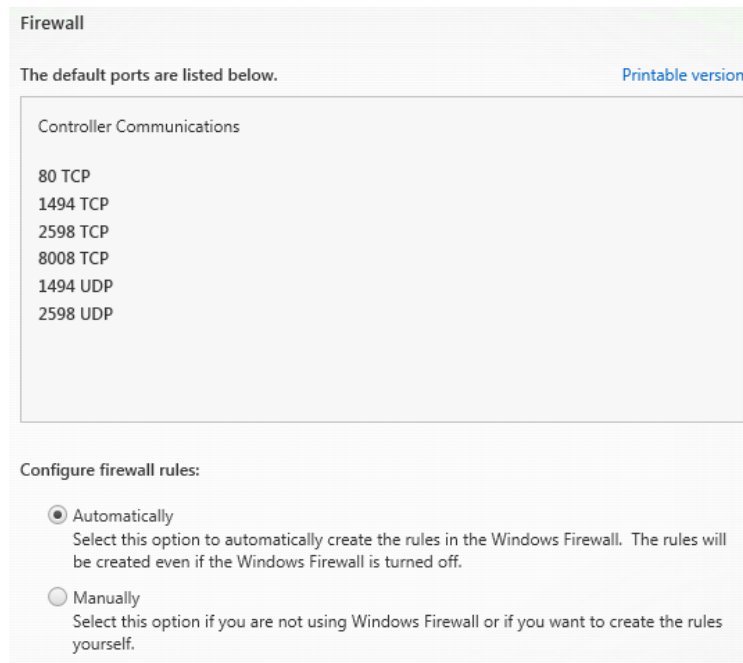




2.5.6 **Optimize Performance** is optional.



2.5.7 At the **Firewall** page click **Next** to automatically configure the Firewall.





2.5.8 At the **Summary** page click **Install**

2.5.9 Midway through the process the installer will reboot the server. After the reboot the setup continues. **Smart Tools** and **Call Home** are optional. Click on **Next**.

Smart Tools

Securely use Call Home, now part of Citrix Smart Tools, to monitor your deployment for common error conditions and receive proactive notifications of issues before they become serious problems.

**How does it work?**

- Configuration and usage data are gathered and periodically sent to Citrix using HTTPS.
- You can log into Citrix Insight Services to view diagnostics results and recommendations.

This information will be used for troubleshooting and diagnostic support purposes, as well as to improve the quality, reliability, and performance of Citrix products, subject to the Citrix Insight Services Policy at <https://cis.citrix.com/legal/> and the Citrix Privacy Policy at <http://www.citrix.com/about/legal/privacy.html>.

[Learn more](#)

I want to participate in Call Home. (Recommended)

I do not want to participate in Call Home.

You can participate later, using PowerShell cmdlets.

2.5.10 At the **Finish Installation** screen click **Finish** to restart the machine one more time.

Finish Installation

The installation completed successfully. ✔ Success

Prerequisites	
✔ Microsoft Remote Desktop Session Host	Installed
✔ Microsoft Desktop Experience	Installed
✔ Windows Remote Assistance Feature	Installed
✔ Microsoft Visual x64 C++ 2013 Runtime	Installed
✔ Microsoft Visual x64 C++ 2015 Runtime	Installed
✔ Microsoft Visual x86 C++ 2013 Runtime	Installed
✔ Microsoft Visual x86 C++ 2015 Runtime	Installed

Core Components	
✔ Virtual Delivery Agent	Installed
✔ Citrix Receiver	Installed

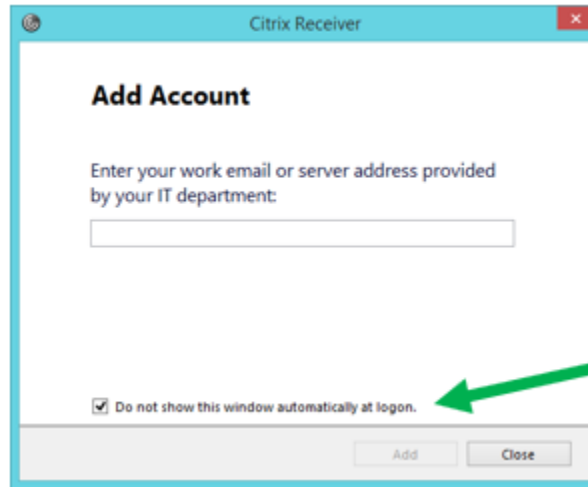
Post Install	
✔ Component Initialization	Initialized

Restart machine

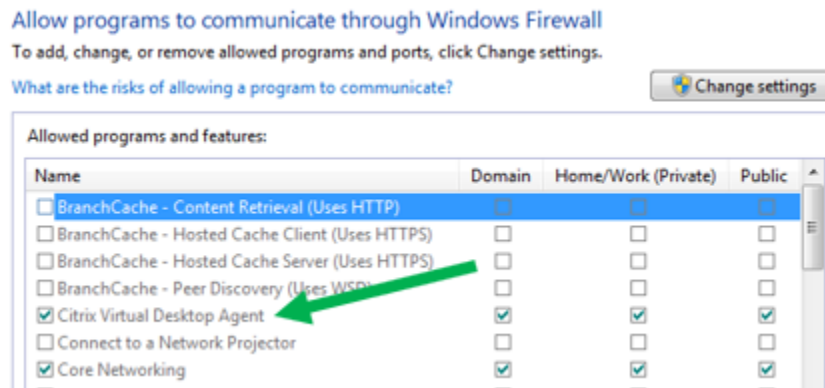
**Finish**



- 2.5.11 After rebooting, the **Citrix Receiver Add Account** window will appear (if you installed Receiver above). Check the **Do Not Show This Window Automatically At Logon** checkbox and **Close**.

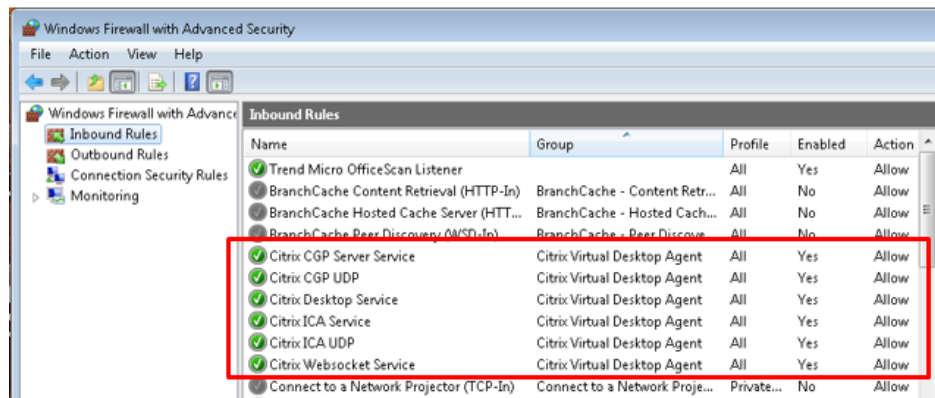


- 2.5.12 Start **Control Panel > Windows Firewall > Allow a program or feature through Windows Firewall**. Verify that **Citrix Virtual Desktop Agent** is listed.





2.5.13 Back in **Windows Firewall** click on **Advanced Settings** to start **Windows Firewall With Advanced Security**. Verify that there are 6 Citrix-related exceptions enabled for all Profiles.



## 2.6 Configure Remote Desktop Licensing On App Server

Note that installing Citrix VDA enables the Remote Desktop Session Host role in Server Manager. **You must install a Remote Desktop license** (either per-user or per-device) or point to a Remote Desktop Licensing Server within the 90 day grace period **or Remote Desktop Session Host and Citrix VDA will stop working**. During the grace period you will be reminded that “Remote Desktop Licensing Mode Is Not Configured” each time you log into the App Server.

2.6.1 To install the Remote Desktop Licensing role on the App Server:

- 2.6.1.1 Open **Server Manager** on the App Server.
- 2.6.1.2 Click on **Add Roles and Features**.
- 2.6.1.3 Select Role-based or Feature-based
- 2.6.1.4 At Select Roles, expand the node for Remote Desktop Services. The Citrix Installer already installed Remote Desktop Session Host. Check the checkbox for **Remote Desktop Licensing**. This will trigger some other tools to come along with it. Click on **Add Features** and finish the wizard.
- 2.6.1.5 When done, open **Server Manager**. Click on **Tools > Terminal Services > Remote Desktop Licensing Manager**.
- 2.6.1.6 In **RDP Licensing Manager**, right-click on the server node and select **Activate Server**.
- 2.6.1.7 At the end, accept the default **Start Install Licenses Wizard Now**
- 2.6.1.8 Follow the licensing wizard and enter your license key (either per-user or per-device).
- 2.6.1.9 Close **Server Manager** and **RDP Licensing Manager**.

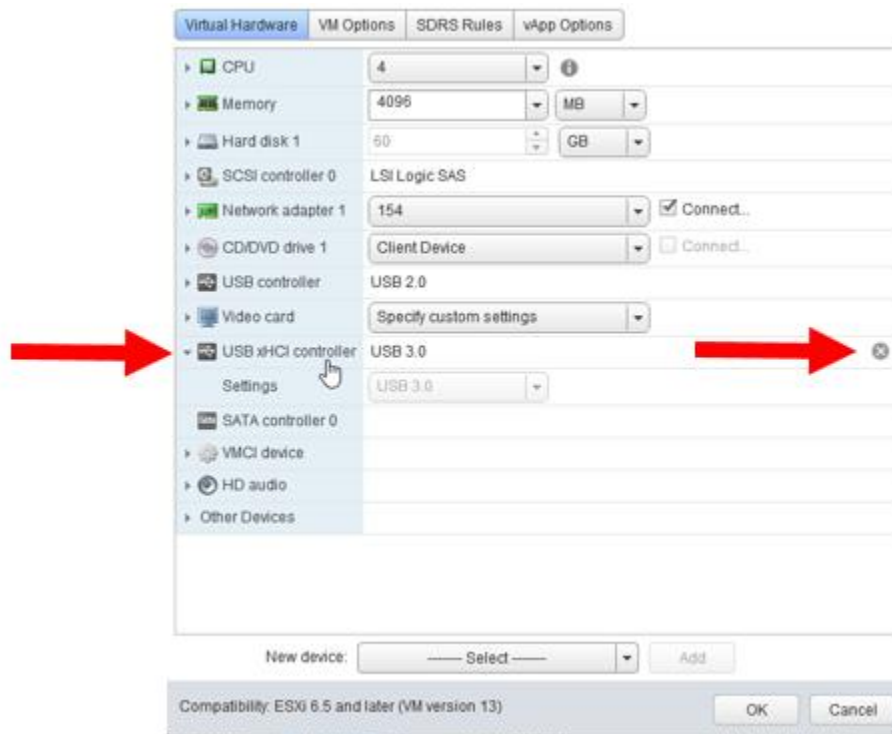
2.6.2 Configure Local Group Policy for Remote Desktop

- 2.6.2.1 Open an ELEVATED command prompt and type gpedit.msc

- 2.6.2.2 Select **Computer Configuration > Administrative Templates > Windows Components > Remote Desktop Services > Remote Desktop Session Host > Licensing**.
- 2.6.2.3 Set **Use The Specified Remote Desktop License Servers** to **Enabled** and enter the name of the licensing server (use localhost if you installed it locally).
- 2.6.2.4 Enable **Hide Notifications About RD Licensing Problems That Affect The RD Session Host Server**.
- 2.6.2.5 Enable **Set Remote Desktop Licensing Mode** and set to either **Per User** or **Per Device** corresponding to your license.

## 2.7 Enable USB Devices In App Server VMs

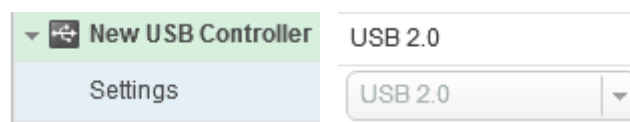
- 2.7.1 In the main vSphere Client window (with the list of all VMs) right-click on the App Server VM and select **Edit Settings**.
- 2.7.2 If a USB 3.0 Controller is present, **REMOVE IT** by clicking on the 'X' to the right.



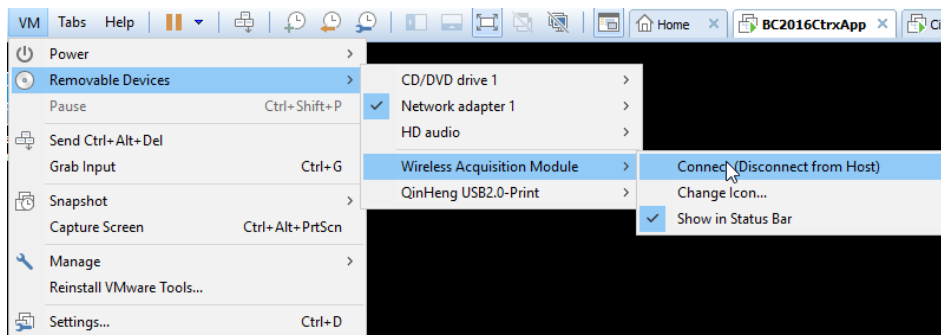
2.7.3 If a USB Controller is not listed in the Hardware tab, select a **New Device** of type **USB Controller** and click **Add**



2.7.4 Set the new USB Controller to USB 2.0. **DO NOT use USB 3.0.**

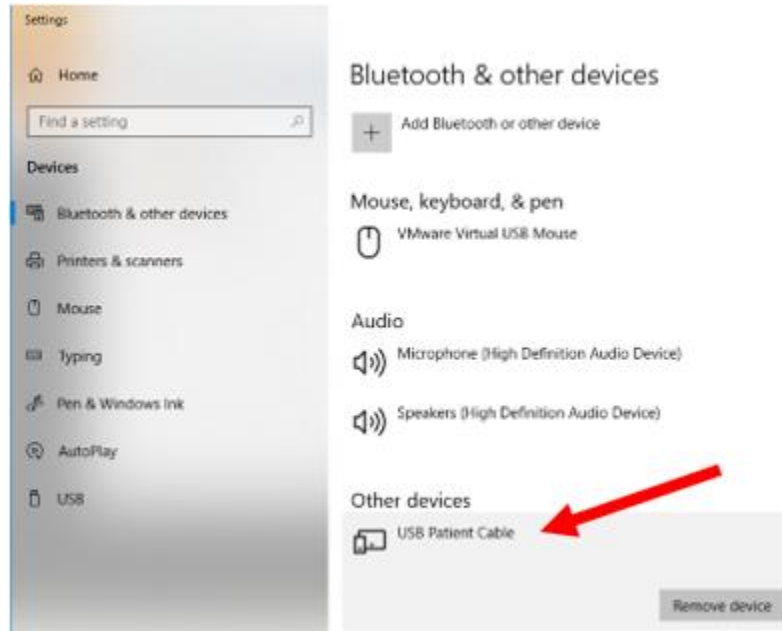


2.7.5 Click **OK**. It will take a few seconds for the VM to detect the change (if it's running). Once successful you should be able to select the device (e.g. Wireless Acquisition Module) from the VM Menu of VM Workstation (if you are using it as a Remote Console).

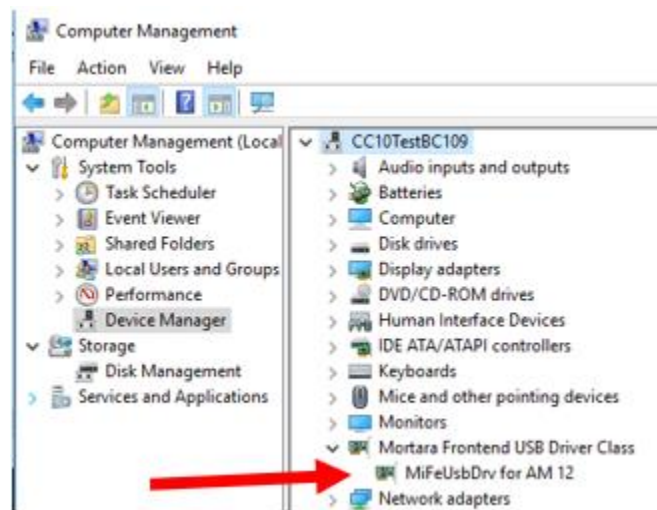




2.7.6 Within the VM you should now see the device within **Settings**



and **Device Manager**

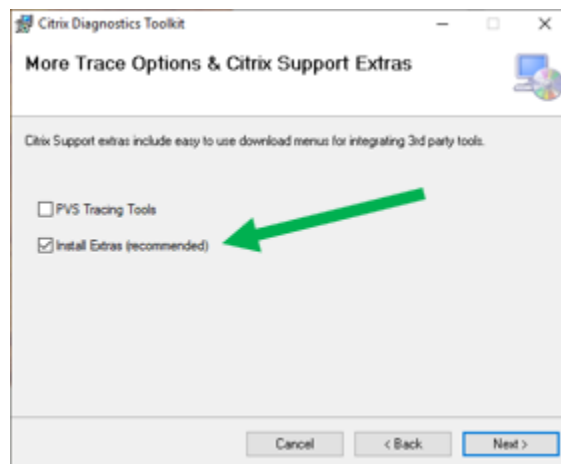
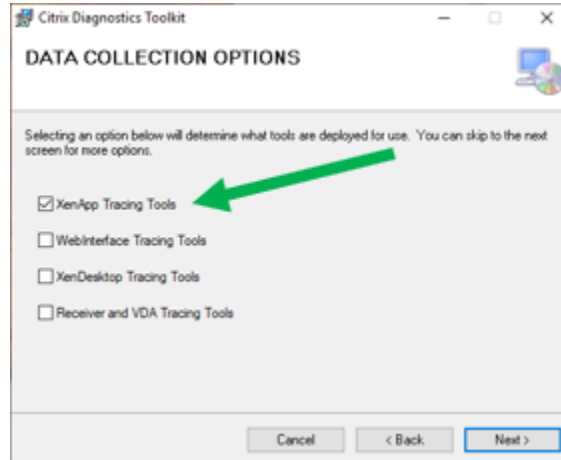


2.8 Disable Active Accessibility Hook In Citrix Diagnostics On App Server(s)

2.8.1 Log into your MyCitrix account and download the Citrix Diagnostics Toolkit from <https://support.citrix.com/article/CTX135075?download>



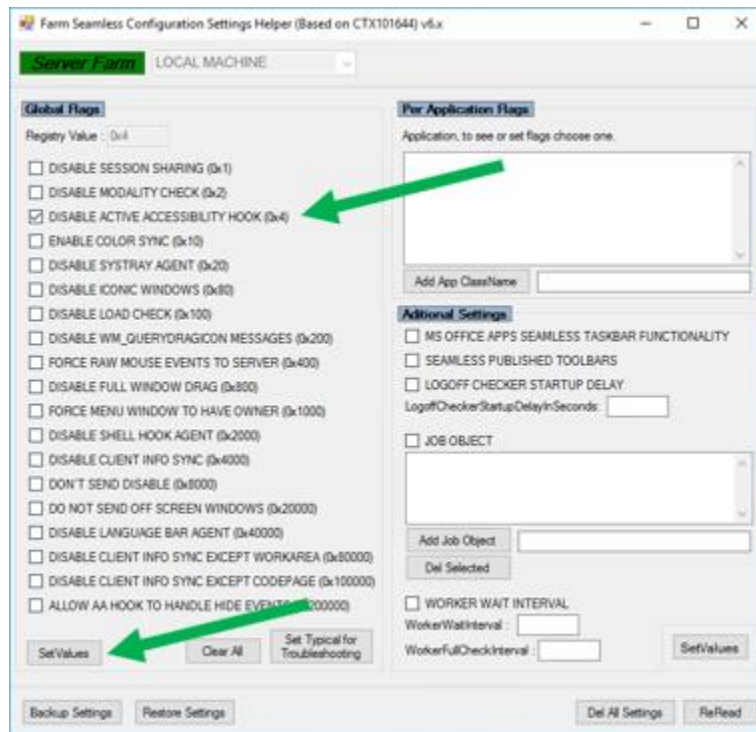
2.8.2 At a minimum you must select at least XenApp Tracing Tools and Install Extras.



2.8.3 On each App Server, from the **Start** menu run **Citrix Diagnostics > Tools > Debug Tools > Seamless Config Helper 6.x ELEVATED** (As Administrator).

2.8.4 Check the **Disable Active Accessibility Hook** checkbox and click on **Set Values**. Close the app.

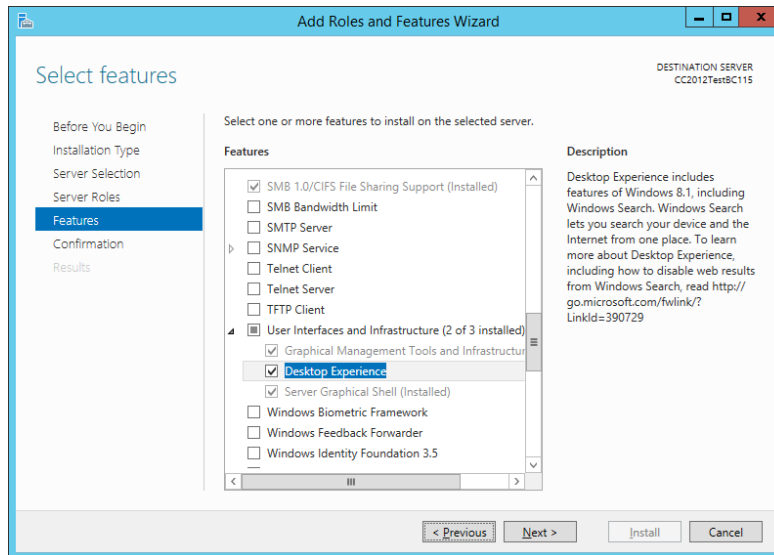




## 2.9 Install Desktop Experience on Server 2012 R2 App Server(s)

Note: this only applies to App Servers running on Windows Server 2012 R2 that will be hosting the Spirometry modality. Server 2016 appears to install this by default.

- 2.9.1 Open **Server Manager** and click on **Add Roles And Features**.
- 2.9.2 In the Features dialog, select **User Interfaces And Infrastructure > Desktop Experience** and finish the wizard. You will need to reboot.

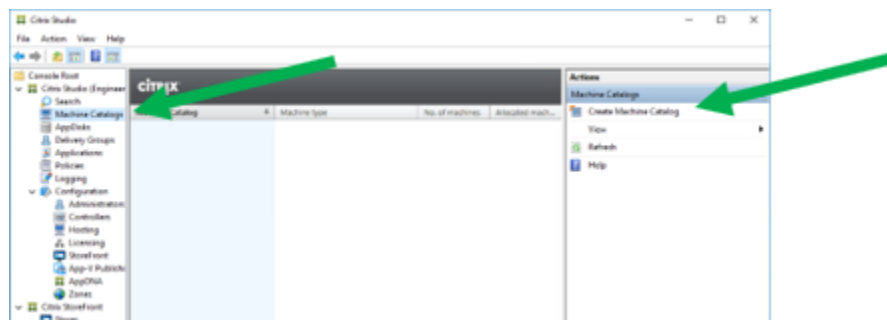


## 2.10 Install Welch Allyn Diagnostic Cardiology Suite Application(s) on App Server(s)

- 2.10.1 Remote Desktop into or open a vSphere console to the App Server VM(s) and install the application(s). Follow the installation instructions for the product regarding security settings (e.g. Firewall), etc.
- 2.10.2 Request the appropriate license code from Welch Allyn Technical Support
- 2.10.3 Note that the Applications must be installed identically on ALL App Servers within the Citrix Delivery Group used to deploy the Applications.

## 2.11 Create Machine Catalog on DDC

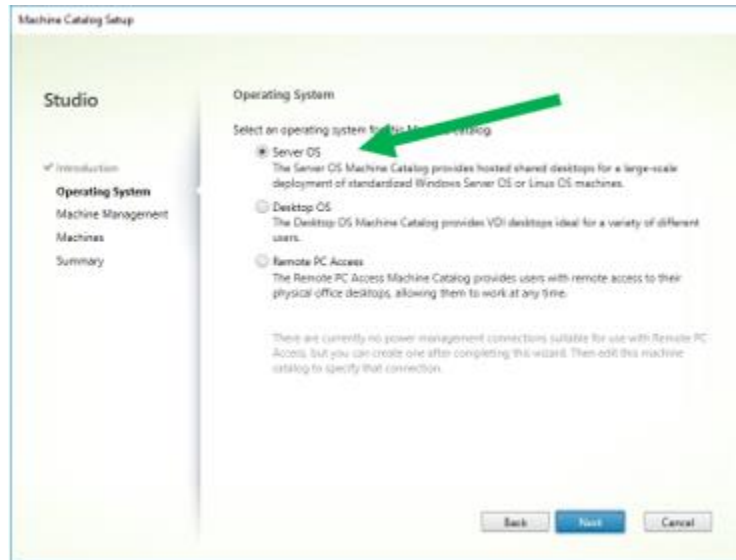
- 2.11.1 Open **Citrix Studio**. Select **Machine Catalogs** in the left window. Click on **Create Machine Catalog**.



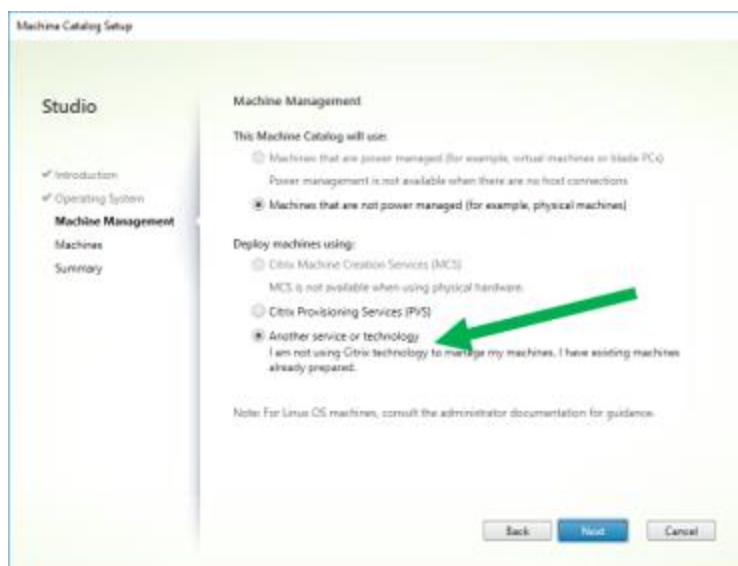


2.11.2 At the **Introduction** page check the **Don't Show This Again** checkbox and click Next.

2.11.3 Accept the default of **Server OS** (since this server is running a server OS) and click **Next**.

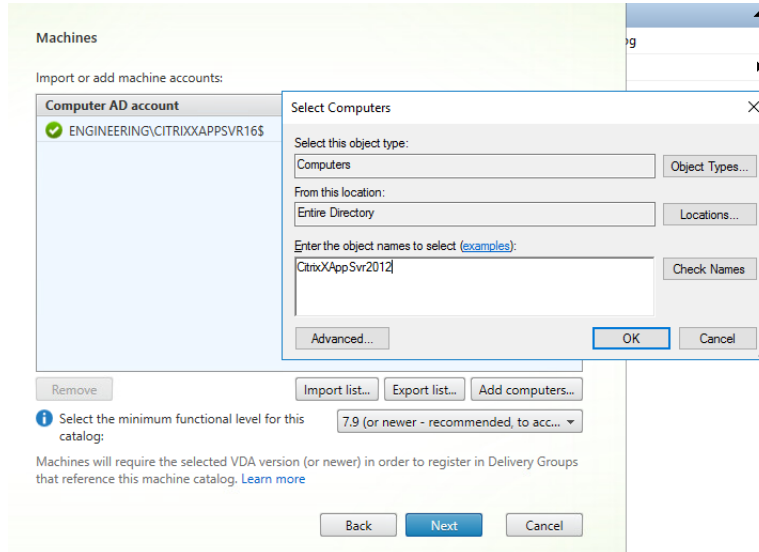


2.11.4 Accept the defaults of **Machines are not power managed** and **Deploy Using Another Service or Technology** and click **Next**





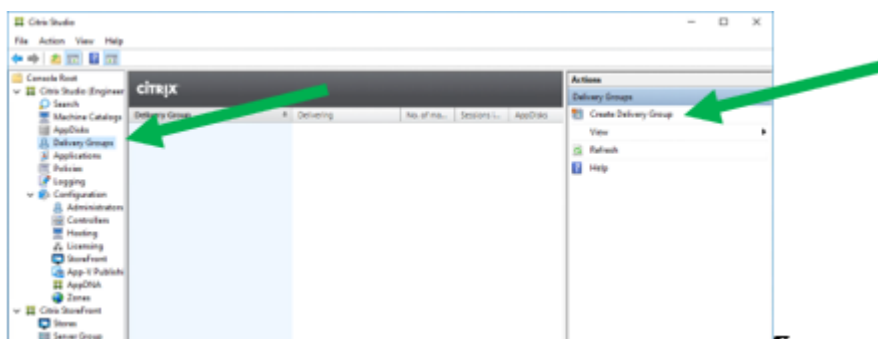
2.11.5 Click on **Add Computers**, and then add all App Servers. Click **OK** and then click **Next**.



2.11.6 At the **Summary** screen give the Machine Catalog a name.

## 2.12 Create A Delivery Group On DDC And Add Application(s)

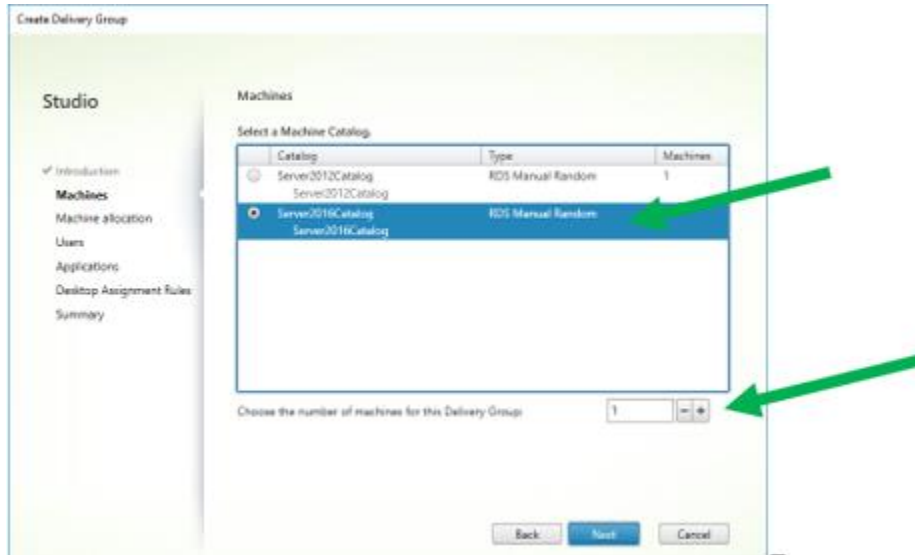
2.12.1 Back in Citrix Studio select **Delivery Groups** in the left Window. Click on **Create Delivery Group**.



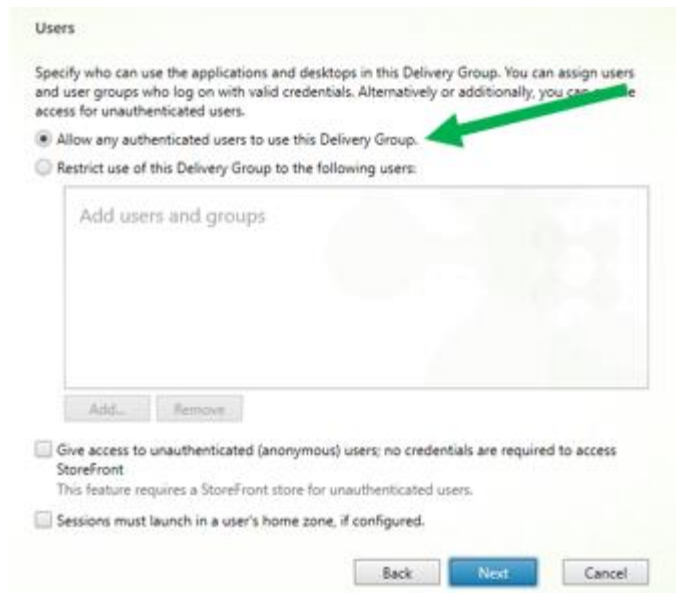
2.12.2 At the Getting Started page check the **Don't Show This Again** checkbox and click **Next**.



2.12.3 Select the Machine Catalog created above and the total number of App Server Machines to use for the Delivery Group

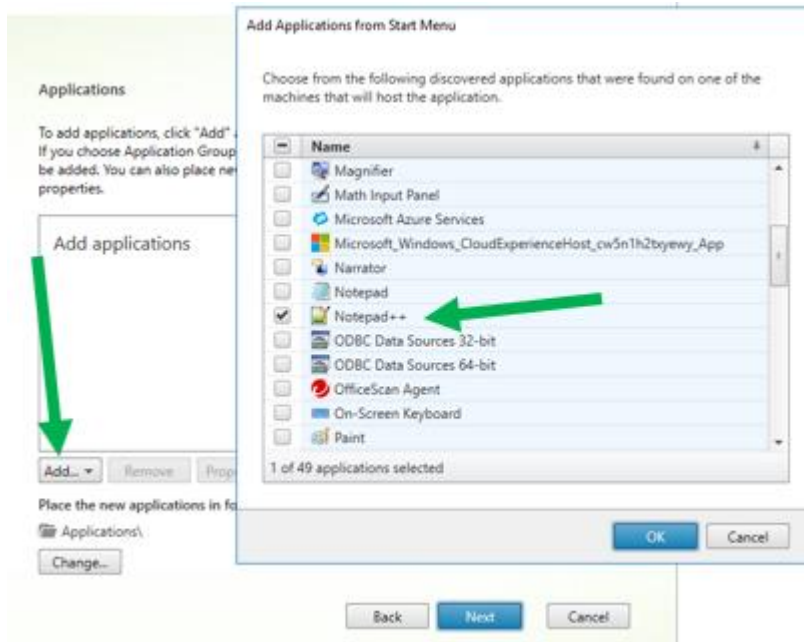


2.12.4 At the Users page, accept the default to **Allow any authenticated (domain) users to use this Delivery Group**. You can also limit the Delivery Group to specific users with the second option. Click **Next**.

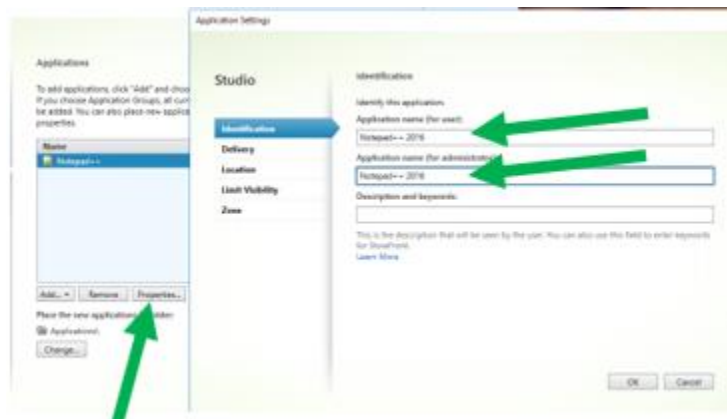




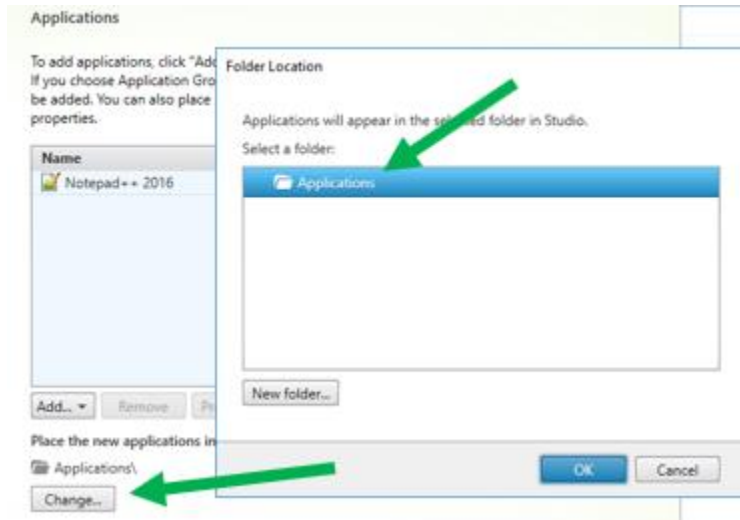
2.12.5 If your application is already installed, click **Add > From Start Menu**, and then select the desired application.



2.12.6 (Optional) You can change the name to be displayed for this application by selecting the app and clicking **Properties**

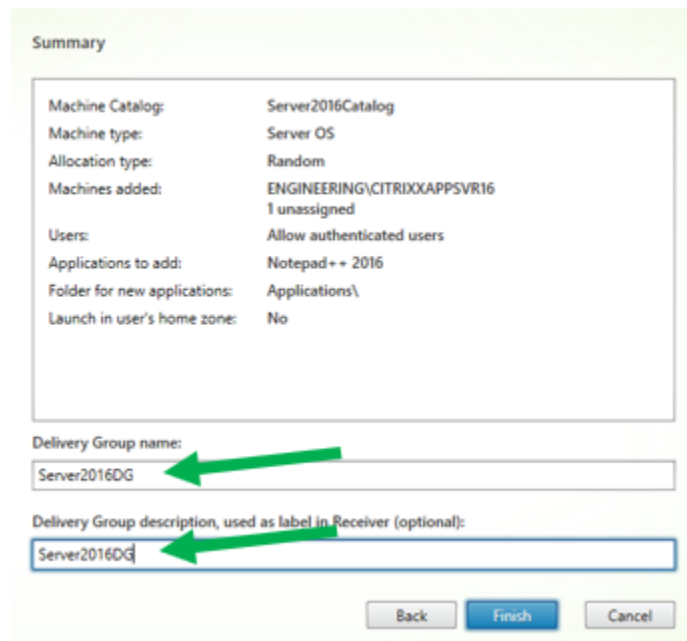


2.12.7 (Optional) You can assign the application to a folder by clicking on **Change**



2.12.8 At the **Desktops** page, click **Next**

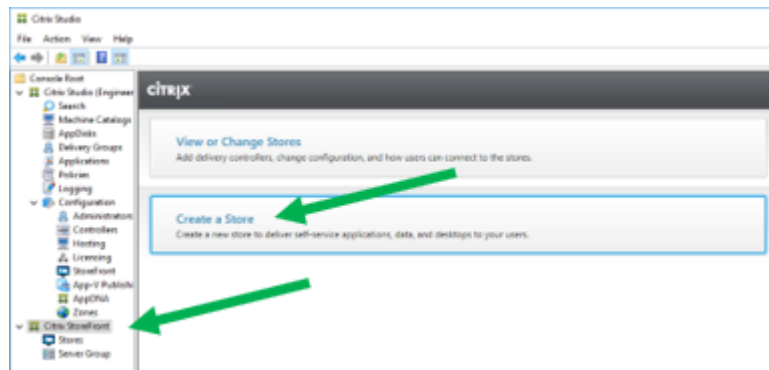
2.12.9 At the **Summary** page enter a name and description for the Delivery Group and click **Finish**.





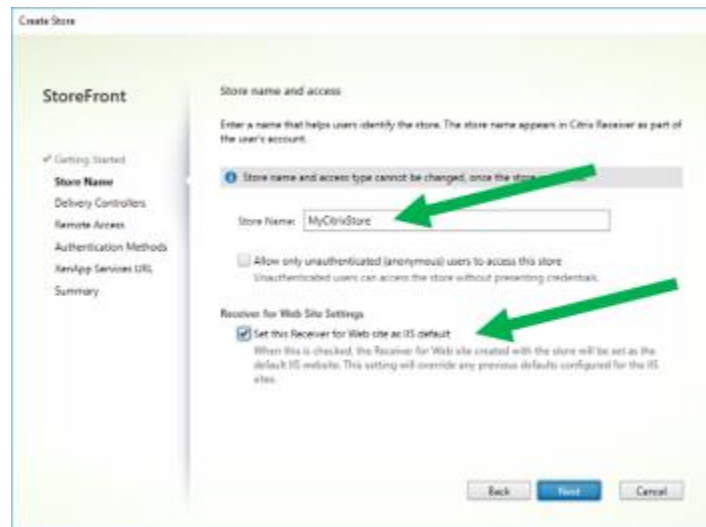
## 2.13 Create A StoreFront On The DDC

2.13.1 Open **Citrix Studio** and select the **Citrix StoreFront** node. Click on **Create a Store**.



2.13.2 At **Getting Started** click **Next**.

2.13.3 At **Store Name**, enter a name for the store. Optionally check the checkbox for **Set this Receiver for Web site as IIS default**. Click **Next**.



2.13.4 At the Delivery Controller page, click **Add**.

2.13.4.1 Enter a display name

2.13.4.2 Select **XenDesktop / XenApp**

2.13.4.3 UNCHECK **Servers are load balanced**

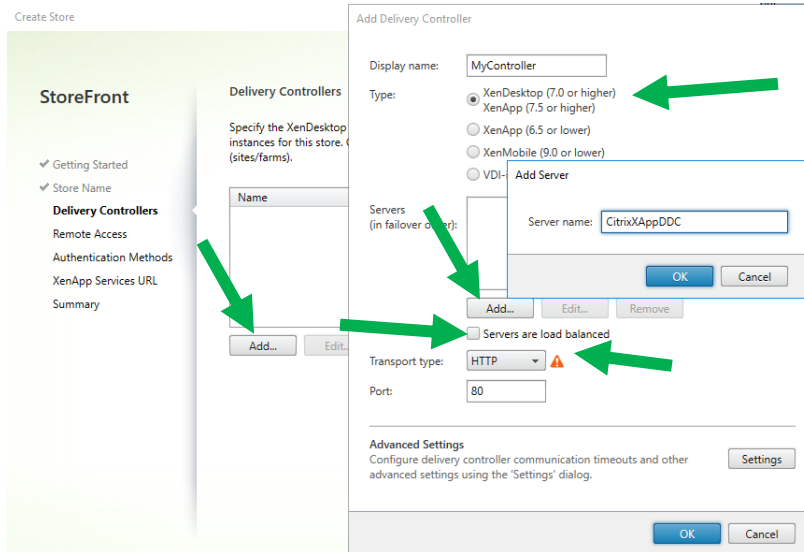
2.13.4.4 Set the **Transport Type** to **HTTP** for now (which is not the default). Until you install an SSL Certificate in IIS you must use HTTP.

2.13.4.5 Click on **Add** below the Servers list. Enter this server's name and click **OK**, and **OK** again.



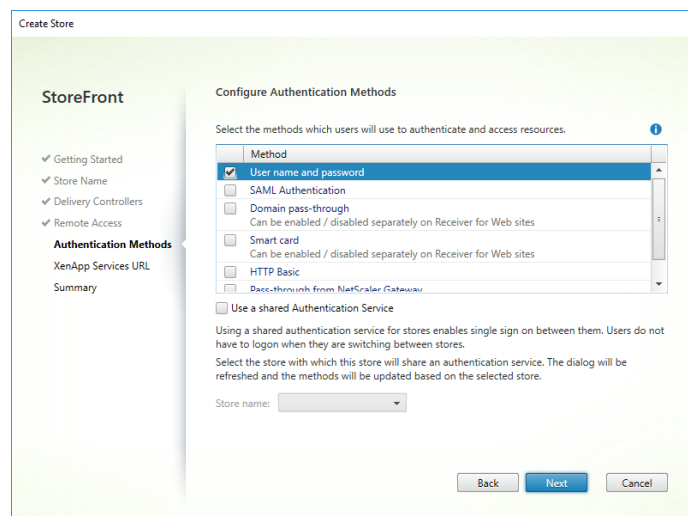


2.13.4.6 Click **Next**.



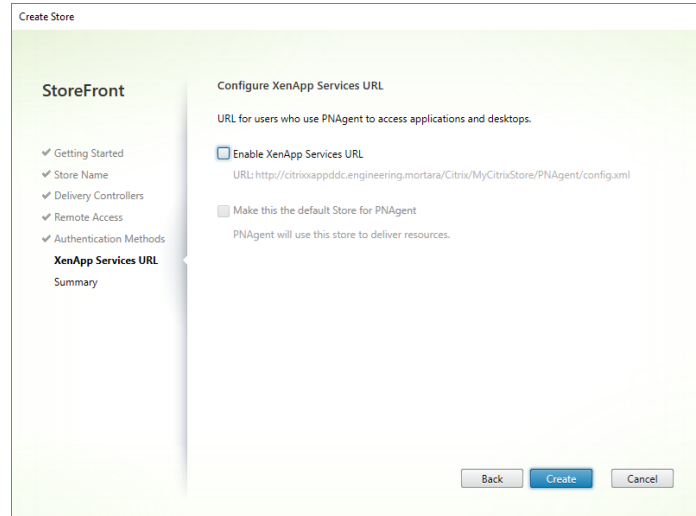
2.13.5 At the **Remote Access** page leave **Remote Access disabled** and click on Next.

2.13.6 At the **Authentication Methods** page accept the default of **User Name And Password** (which will authenticate to the domain of this server). Optionally you can use Domain Pass Through so that the credentials of the currently logged on user on a domain-joined computer will automatically be used. Click **Next**.



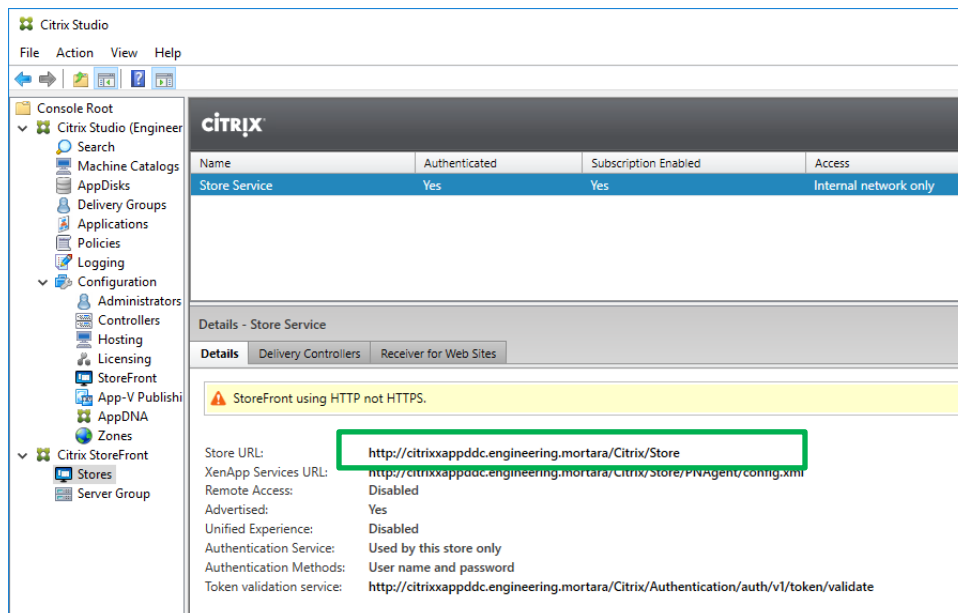


2.13.7 At the **XenApp Services URL** page, UNCHECK the **Enable** checkbox and click **Create**.



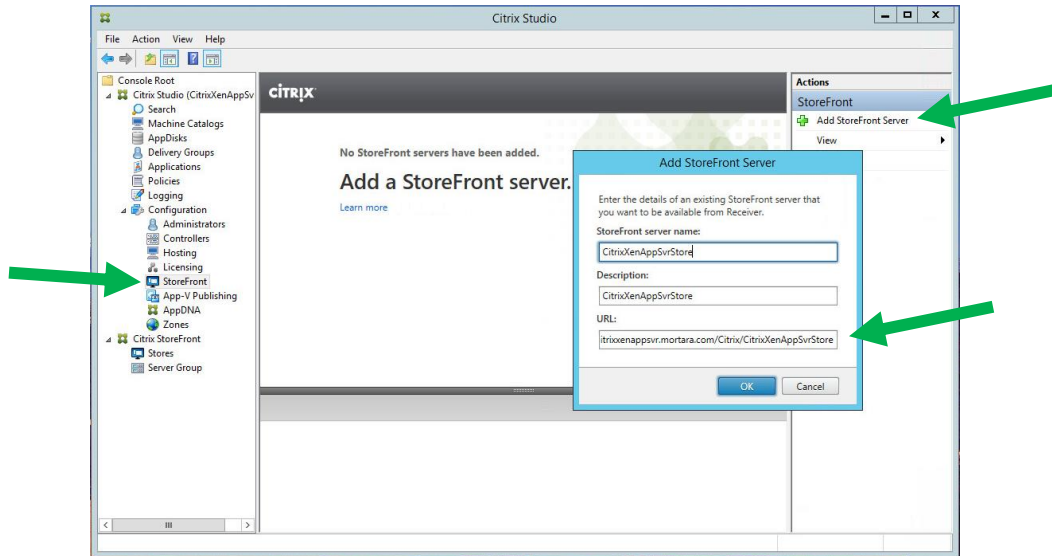
2.13.8 Click on **Finish**

2.13.9 Select **Citrix StoreFront > Stores** in the left pane and make note of the Store URL.

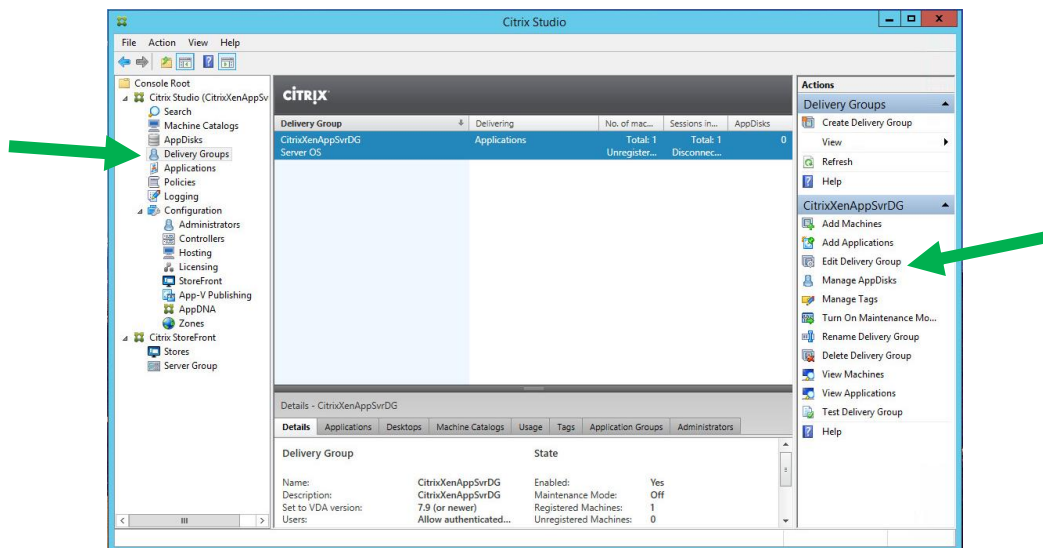




2.13.10 Select **Citrix Studio > Configuration > StoreFront** in the left pane and click on **Add StoreFront Server**. Enter a name and description and copy the URL from the previous step. Click on **OK**.

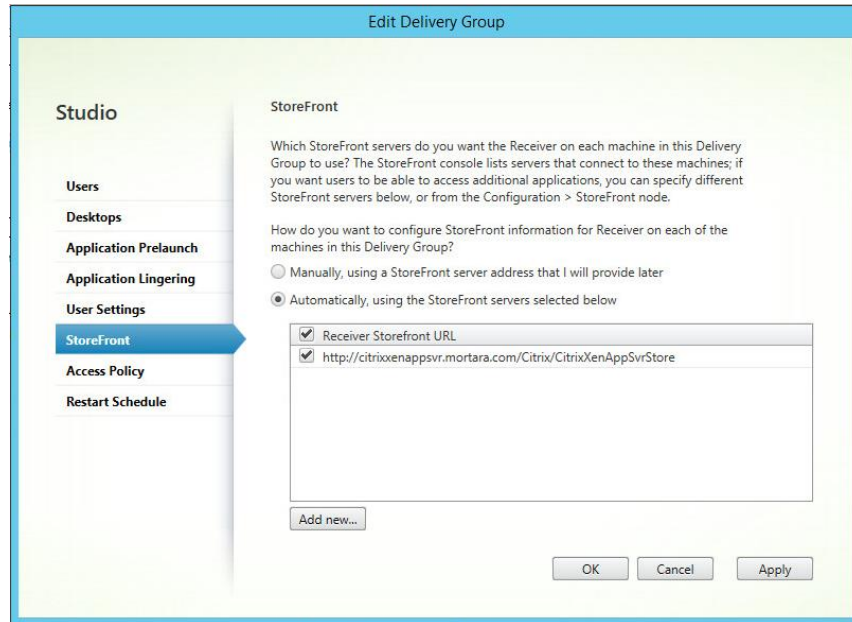


2.13.11 Select **Citrix Studio > Delivery Groups**. Select the Delivery Group you created previously and click on **Edit Delivery Group**.





2.13.12 Select the StoreFront tab at the left. Select **Automatically** and check the checkbox for the StoreFront you just created. Click on OK.



## 2.14 Configure Citrix Policies For Welch Allyn Diagnostic Cardiology Suite Display On DDC

### Note on USB Redirection in Citrix and Windows Group Policy

You must NOT enable the following Citrix policies

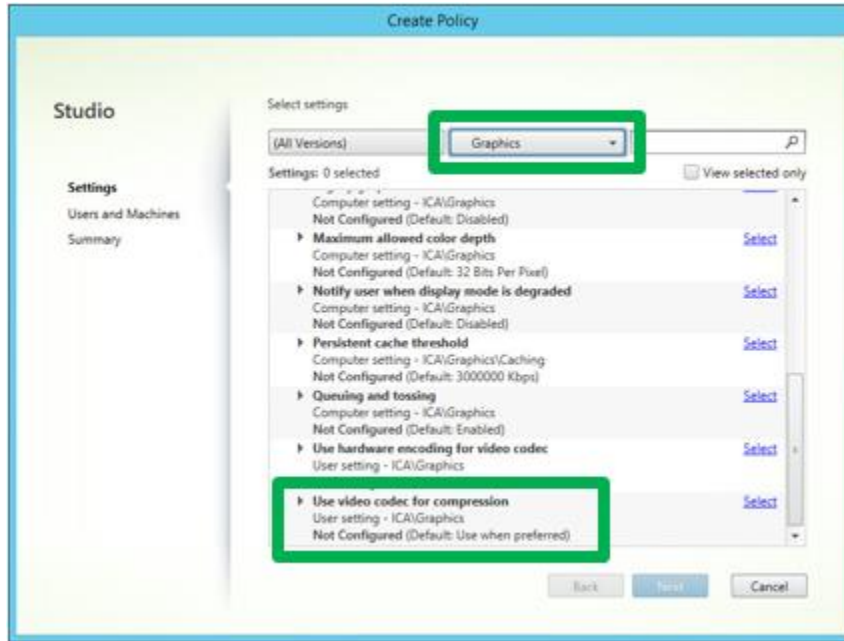
1. **Client USB Device Redirection** policy within **Citrix Studio > Policies** on the DDC
2. Any of the items within **Computer Configuration\Administrative Templates\Citrix Receiver\Remoting client devices** in the Citrix Local Group Policy template on the Client PC.

USB device redirection is handled by the Connex Link application which must be installed on each Client PC (see section **2.15** below). The Citrix policies above conflict with Connex Link and will cause the devices to not perform correctly.

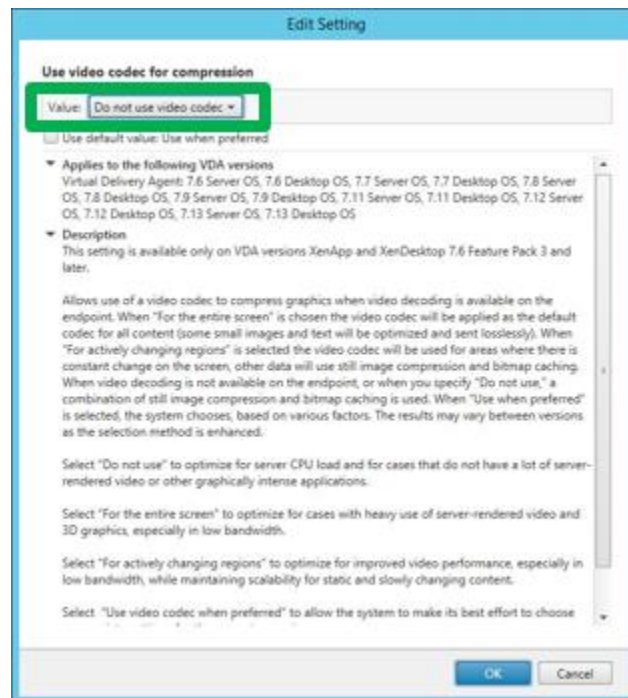
2.14.1 Open **Citrix Studio** and select **Citrix Studio > Policies** in the left pane. Click on **Create Policy** in the Actions pane.



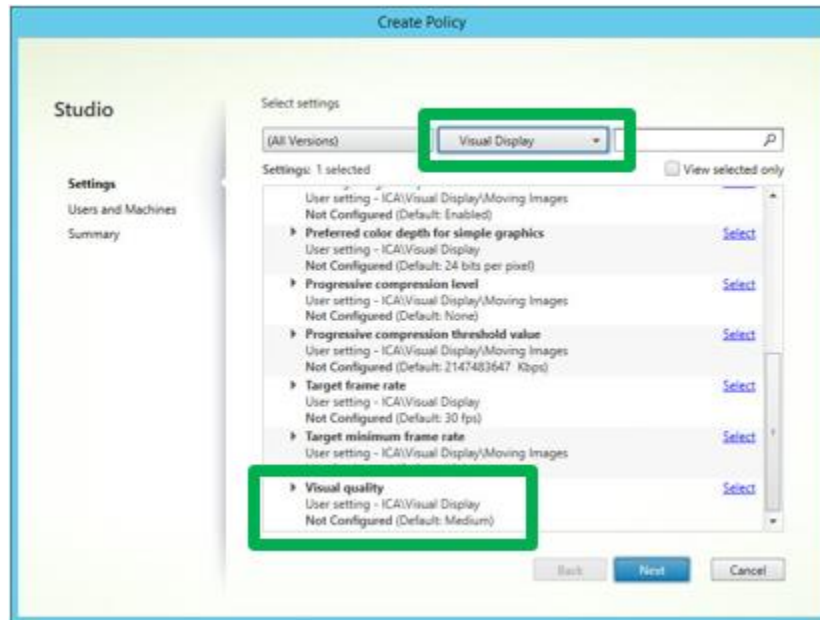
2.14.2 In the **All Settings** listbox select the **Graphics** filter. Scroll to the bottom of the settings list below it and click on **Select** next to the **Use Video Codec For Compression** setting.



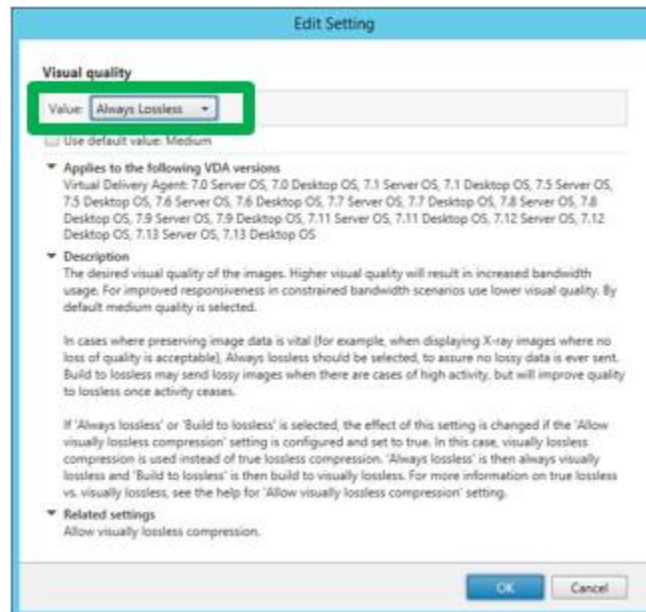
2.14.3 Select **Do Not Use Video Codec** from the listbox at the top and click **OK**



2.14.4 Back in the **Create Policy** dialog, scroll down in the **All Settings** listbox and select **ICA > Visual Display**. Scroll to the bottom of the settings list below it and click on **Select** next to the **Visual Quality** setting.

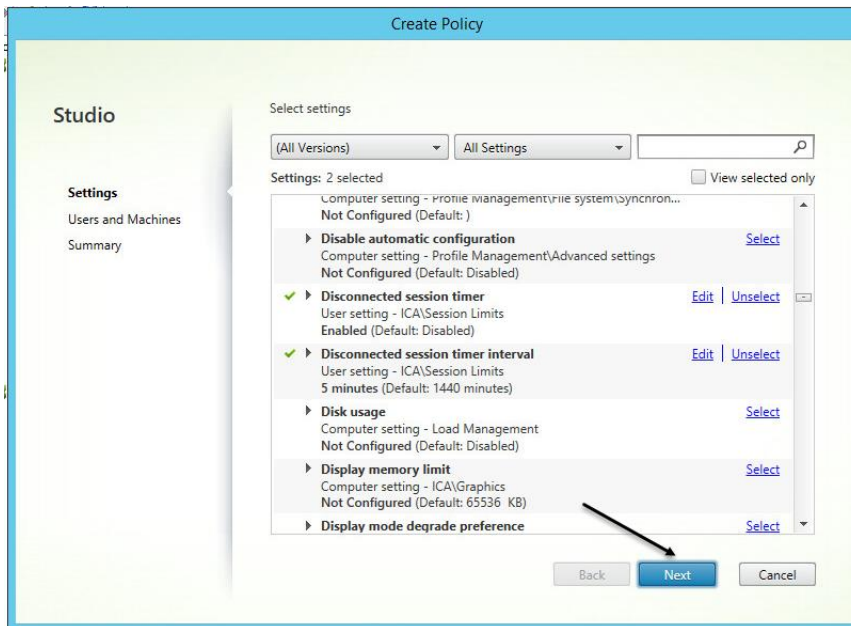


2.14.5 Select **Always Lossless** from the listbox at the top and click on **OK**.



2.14.6 (Optional) Back in the **Create Policy** dialog, scroll down in the **All Settings** listbox and select the following settings:

Disconnected Session Timer – Enabled  
 Disconnected session timer interval – 1 minute

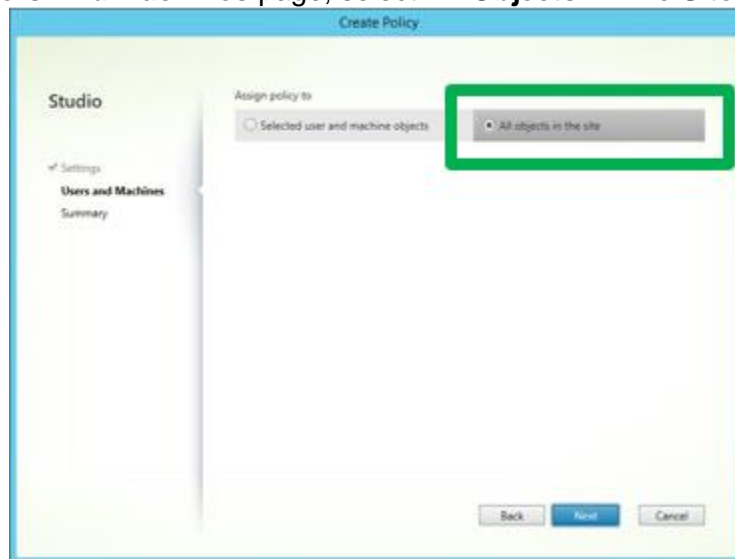


**Tip:** Users may close the published XenApp when finished with a session but may not remember to log off, preventing other users from having access.

The recommended settings will help to minimize this situation.

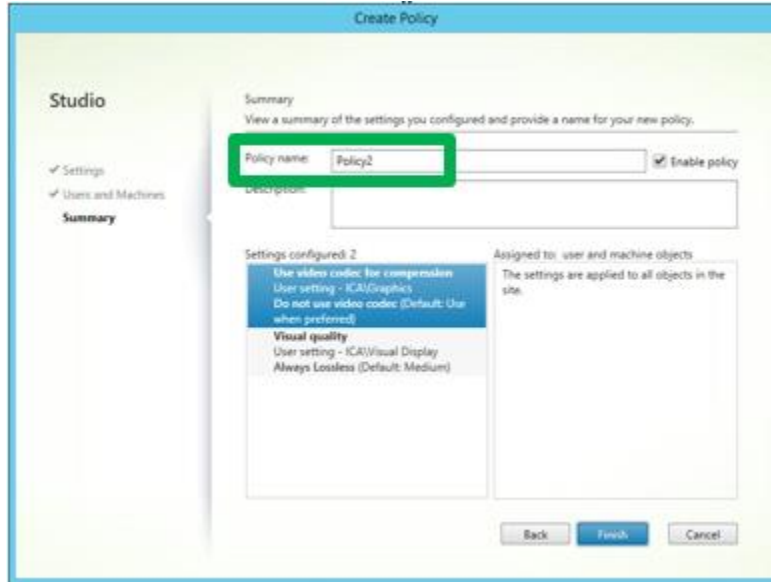
2.14.7 Back in the **Create Policy** dialog, click on **Next**

2.14.8 At the **Users And Machines** page, select **All Objects In The Site** and click on **Next**.





2.14.9 Give the policy a reasonable name and then click on **Finish**.



2.15 Install Connex Link On Client PCs

Connex Link is REQUIRED for all Citrix and Remote Desktop clients of Welch Allyn Diagnostic Cardiology Suite. It is responsible for redirecting USB device input between the Client PC and the App Servers.

- 2.15.1 Insert the Welch Allyn Diagnostic Cardiology Suite Manager install media into each Client PC.
- 2.15.2 Run the setup file \ConnexLink\ConnexLink.exe on the install media. This bootstrapper will automatically detect 64-bit versus 32-bit Client PCs and install the appropriate driver.

NOTE: Connex Link can also be installed using:

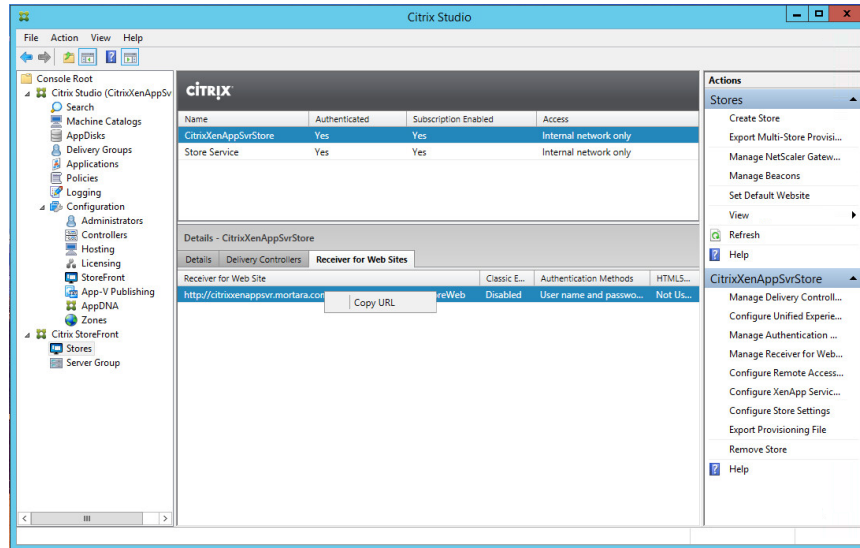
- Group Policy using the appropriate MSI file from the x64 and x86 subdirectories.
- Deployment Tool Services



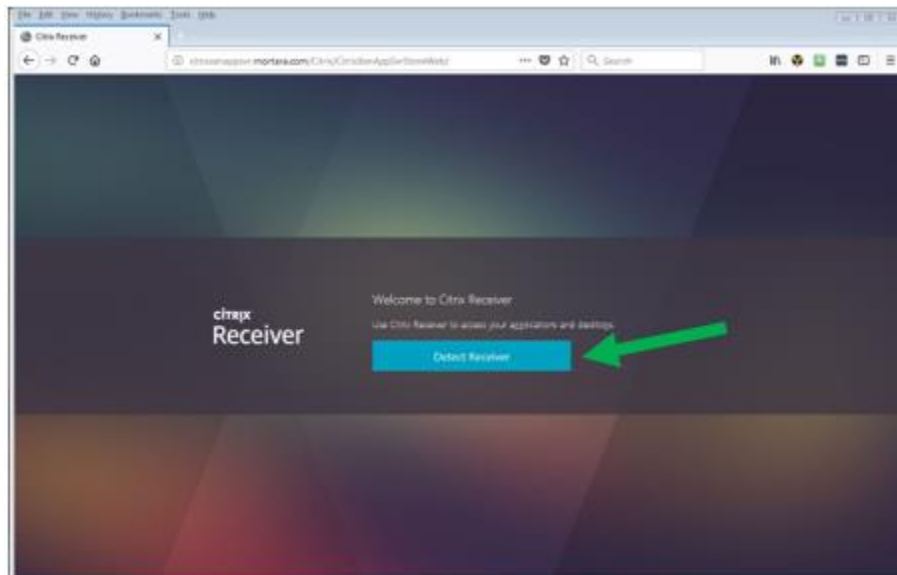


## 2.16 Test StoreFront On Client PCs

- 2.16.1 Open **Citrix Studio** on the DDC and select **Citrix StoreFront > Stores** in the left pane. Click on the **Receiver For Web Sites** tab. Make note of the **URL**. Note do **NOT** use the Store URL for this test – it will get Access Denied.

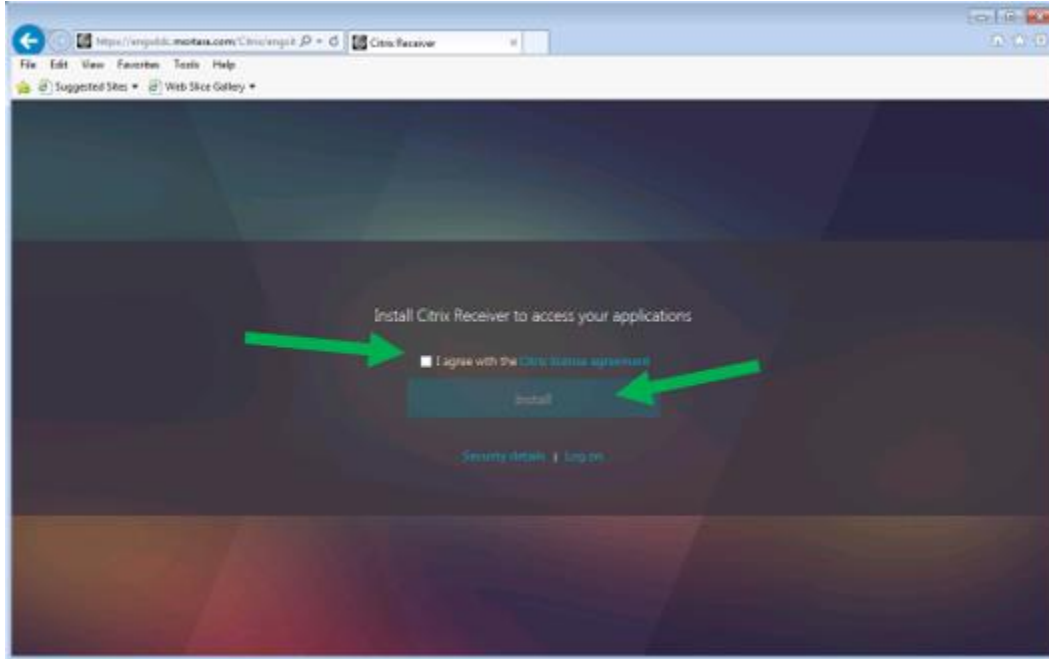


- 2.16.2 Paste the URL into a browser on a Client PC. Click on **Detect Receiver**.

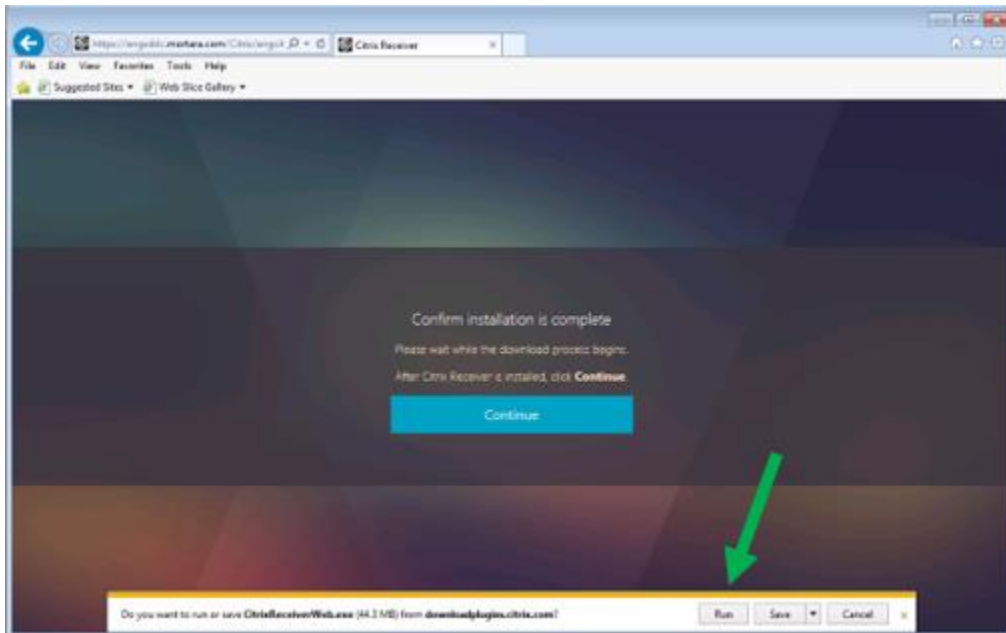




### 2.16.3 Check **I agree** and press **Install**

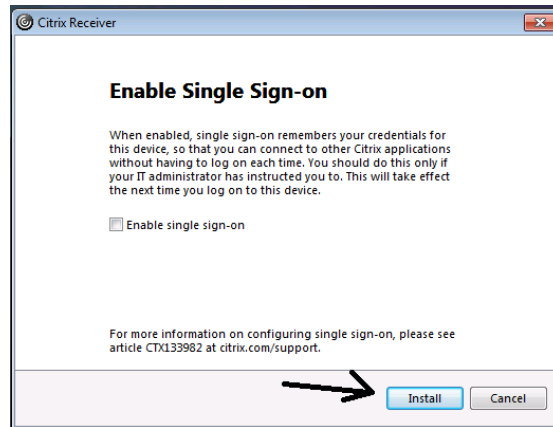


### 2.16.4 Click **Run** when option to download CitrixReceiverWeb.exe appears





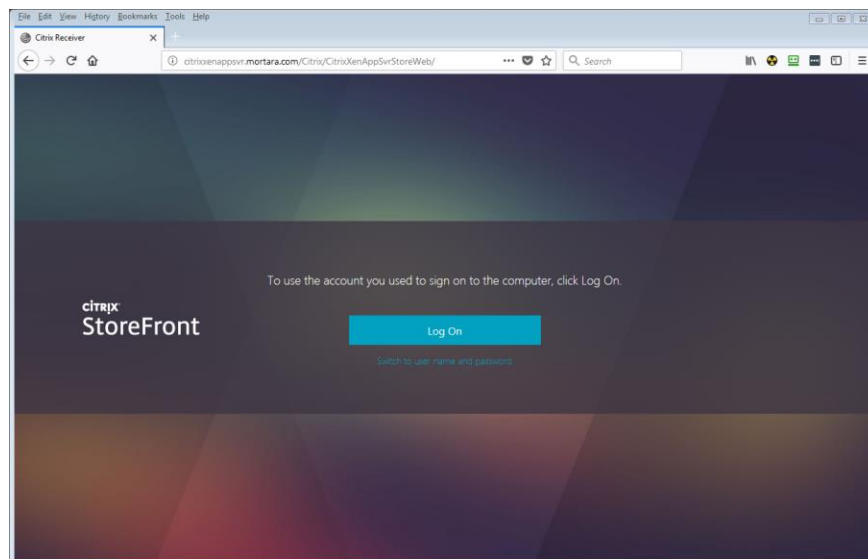
2.16.5 Click **Start**, then check **Agree**, **Next** and **Install**.



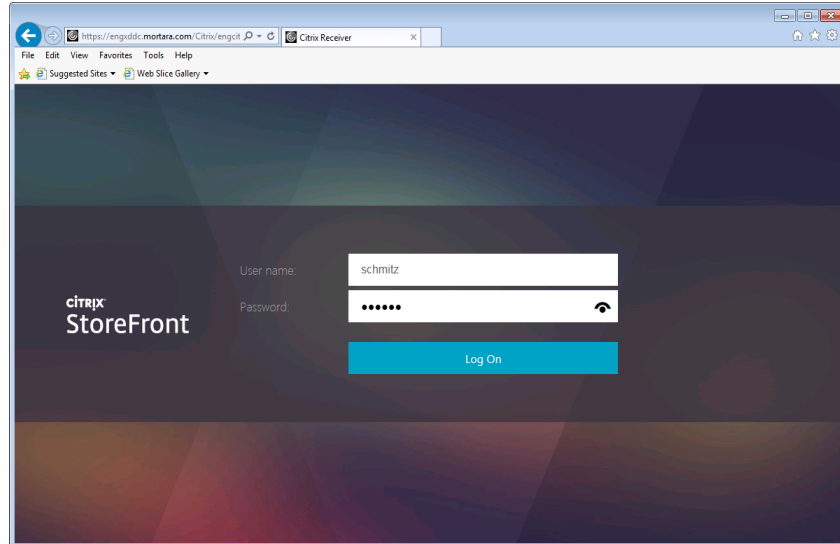
**Note:** Although “Enable single sign-on” is not checked in this example, it is also an available option for the installation.

Details in the screen shot are applicable.

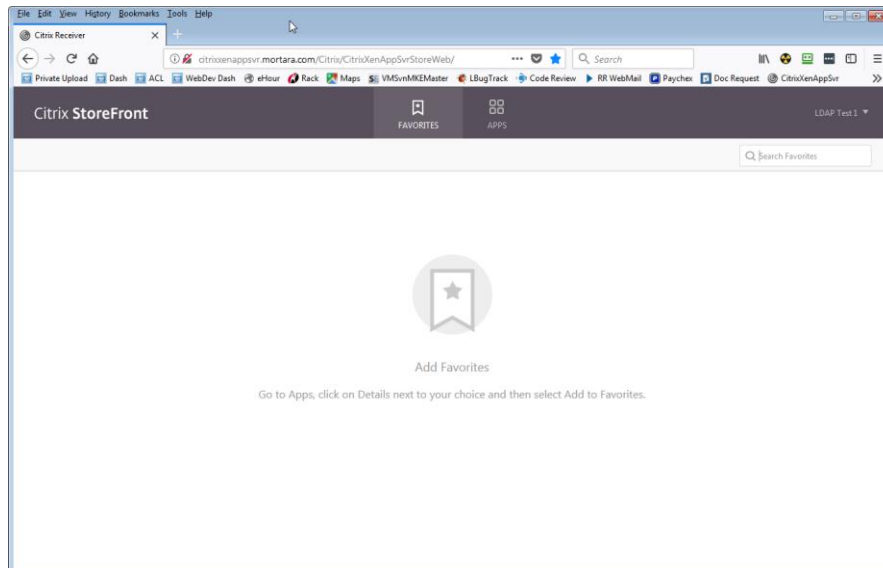
2.16.6 If you enabled both Username And Password and Domain Pass Through authentication methods and you are logged into a domain-joined machine, you will have a choice of logon methods. Click **Log On** to use your existing domain credentials or click **Switch To User Name And Password** to enter them manually.



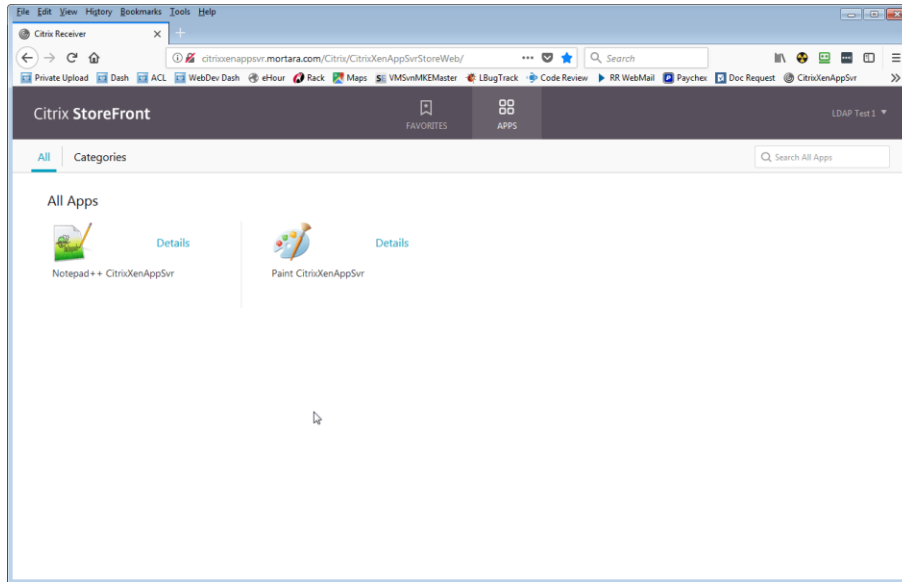
Login with your domain credentials (**without** the domain name).



2.16.7 Click on the **Apps** button in the toolbar at the top. The XenApps available to that user will appear.



2.16.8 Select an app and verify that it starts and displays correctly. Leave the app running for the next step.



2.16.9 Back on the App Server, open **Task Manager** and select the **Users** tab. You should be able to see the user session that has logged in via StoreFront with a **Session name** similar to ICA-CGP #x. Close the application you just started.

