



Hillrom™



LET US CHANGE YOUR VIEW

WELCH ALLYN PANOPTIC® OPHTHALMOSCOPES

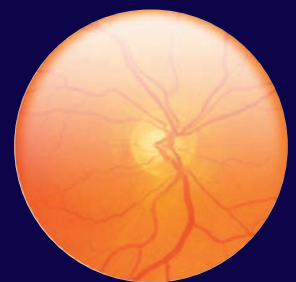
- Long, lasting LED illumination
- 20X larger view vs. standard ophthalmoscopes
- Familiar focus wheels and standard apertures included



Standard
Ophthalmoscope

20X

LARGER VIEWING AREA



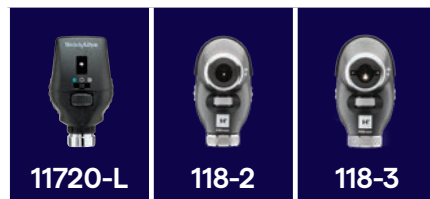
PanOptic
Ophthalmoscope



TAKE A CLOSER LOOK AT THE VALUE PANOPTIC PLUS ADDS

- 1** Add-on the Welch Allyn iExaminer Smartbracket and transform an optical exam to capture photos and video.
- 2** Eye alignment technology helps you direct a patient's gaze for better entry into the eye.
- 3** Both PanOptic heads are optimized for use with the new Lithium Ion Plus Power Handle, staying bright over the life of a battery charge with no color change when dimmed, unlike with halogen lamps.

Welch Allyn Ophthalmoscopes



	11720-L	118-2	118-3
Type	Traditional	PanOptic	PanOptic Plus
Warranty	1 year	1 year	5 year
Larger field of view	—	20X	20X
Designed with DuraShock	—	Yes	Yes
Eye alignment technology	—	—	Yes
Digitally-capable	—	—	Yes



See for yourself how Hillrom is bringing the future of care into view at hillrom.com/physicalexam.

hillrom.com

Navan Business Park, Dublin Road, Navan, Co Meath, C15 AW22, Ireland

*Based on pre-market research conducted by Hillrom for the Welch Allyn PanOptic Plus with Welch Allyn iExaminer SmartBracket and iExaminer Pro App

The PanOptic is intended to be used by clinicians and medically qualified personnel for examination of the retina, cornea, aqueous, lens and vitreous of the eye under illumination and magnification on pediatric and adult patients. The MacroView is intended to be used by clinicians and medically qualified personnel for examination of the external ear, ear canal, and tympanic membrane under illumination and magnification on pediatric and adult patients. The otoscope is also intended to assess the flexibility of the tympanic membrane through air pressure and for general illumination of the oral and nasal cavities. Medical device (2017/745/EU): Class I (CE) Manufacturer: Welch Allyn, Inc., 4341 State Street Road, Skaneateles Falls, NY 13153 USA. EC Rep.: Welch Allyn Limited, Navan Business Park, Dublin Road, Navan, County Meath, C15 AW22, Ireland. These medical devices are a regulated health product which, pursuant to such regulation bears a CE mark. Carefully read the detailed instructions for safe and proper use included in the documents accompanying the medical devices. The personnel of healthcare establishments are responsible for the proper use and maintenance of these medical devices. Hill-Rom reserves the right to make changes without notice in design, specifications and models. The only warranty Hill-Rom makes is the express written warranty extended on the sale or rental of its products.